

# **NORTHERN DIVER**

SPECIALIST RESCUE EQUIPMENT



**Police, Fire, Water, Mountain, Flood Defence, Coastguard & RNLI Apparel.  
Designed & Developed in the UK.**



Company Overview.

## Northern Diver - Specialist Rescue Equipment

Northern Diver has been established for 40 years. We manufacture drysuits and associated equipment for sport, commercial, military and rescue applications around the world. We are also the prime contractor to the British Ministry of Defence for this type of equipment. When it comes to rescue, we currently supply over 200 organisations across the UK and overseas.

As well as manufacturing and stocking a wide range of rescue drysuits and equipment, which are available for immediate delivery in an emergency, we can manufacture bespoke drysuits and other items to your requirements. Examples of the finished products can be found in this brochure. If you don't see what you're looking for, contact our

design team. They can be reached by emailing [louise@ndiver.com](mailto:louise@ndiver.com). Our in-house repairs and alterations department is always available for those difficult jobs - email [jackie@ndiver.com](mailto:jackie@ndiver.com). Courses in drysuit repair and maintenance are available on request.

We can offer the complete solution to your procurement needs: an extensive product range, ready-to-go stock, bespoke manufacturing and a useful after-sale service. More information on our range and services can be found in the following pages. Please contact us with any queries.

Telephone: +44 (0) 1257 25 69 34  
Mobile: +44 (0) 7854 25 20 13  
Email: [craig@ndiver.com](mailto:craig@ndiver.com)



02	//	<b>Company Overview</b>
04	//	<b>Custom Rescue Drysuits</b> Front Entry Drysuits Rear Entry Drysuits Waist / BIB Entry Drysuits Fabric Specifications Custom Suit Options
18	//	<b>Stock Drysuits</b> Neoprene Drysuit Membrane Drysuits Specialist Suits
32	//	<b>Drysuit Components</b>
34	//	<b>R&amp;D Suit Development</b>
35	//	<b>Thermal Garments</b> Undersuits Rash Vests Socks
40	//	<b>Wetsuits</b>
42	//	<b>Buoyancy Aids</b>
44	//	<b>Life Jackets</b>
45	//	<b>Rescue Helmets</b>
48	//	<b>Gloves</b>
51	//	<b>Footwear</b>
52	//	<b>Knives</b>
54	//	<b>Masks &amp; Snorkels</b>
55	//	<b>Fins</b>
57	//	<b>Lighting</b>
59	//	<b>Reach Pole &amp; Location Marker Floats</b>
60	//	<b>Bags</b>
66	//	<b>Inflatable Rescue Equipment</b> Boats Rescue Sleds Rescue Tube Walkway Life Raft
72	//	<b>Size Charts</b>
74	//	<b>ND Working With You</b>
75	//	<b>Online Catalogue</b>

Photograph: Equipment Testing, Ecclestone Delph, Chorley.

## Designed For You. Front Entry Suits

Front entry is the most common surface drysuit zip position on the market.

This design makes donning the drysuit simple and assistance free. The zip runs diagonally from the left shoulder to the waist on the right hand side.

We can modify these drysuits to match your requirements, for example fabric, colour, relief zips, embellishments, seal types, pockets and footwear.

Full details are on pages 12 – 17. Please contact us with your requirements and any questions you may have.

### Need inspiration?

See right and over the page for examples.

Drysuits are normally supplied with a storage bag (folds out for use as a changing mat) and a maintenance/repair kit.



L: 76cm H: 51cm Width: 12cm



Caldervally Search & Rescue



### SOUTH WALES POLICE

***"To specification, on time  
and at a very competitive price."***

- South Wales Police

- Nomex® flame retardant fabric
- BDM metal dry zip with protective flap
- Neoprene neck and wrist seals
- 25mm reflective bands on arms and legs
- Radio pocket on right upper arm
- Bellows notebook pockets on thighs (name printing available on pocket flap)
- BDM metal relief zip with protective cover at securing point
- Shaped Kevlar® kneepads
- Fitted with latex socks
- Internal elasticated adjustable braces



### BRECON MOUNTAIN RESCUE

- High visibility orange 320D breathable Embratex fabric upper body
- Black 450D Aquatex fabric lower body
- BDM metal dry zip with protective flap
- Neoprene neck and wrist seals
- 25mm reflective bands on arms and legs
- 4 colour logo printing
- Custom reflective strips on upper arms
- Bellows pockets (fitted with stainless steel D-rings) on thighs
- Kevlar® kneepads and seat area
- Fitted with latex socks







## INLAND FISHERIES

- Red 320D breathable Embratex fabric upper body
- Black 500D Cortex fabric lower body
- BDM metal dry zip with protective flap
- Neoprene neck and wrist seals
- 25mm reflective bands on arms and legs
- 4 colour logo printing
- Custom reflective strips on upper arms
- Bellows pockets on thighs
- Radio pocket on upper left arm
- Kevlar® kneepads and seat area
- Internal elasticated adjustable braces
- Fitted with soft toe boots
- Supplied with storage bag (folds out for use as a changing mat) and a maintenance/repair kit



## WEST MIDLANDS SAR

- Orange 450D Aquatex fabric upper body
- Black 500D Cortex fabric lower body
- BDM metal dry zip with protective flap
- Neoprene neck and wrist seals
- 25mm reflective bands on arms and legs
- Custom reflective strips on upper arms
- Radio pocket on upper right arm
- Bellows map pocket on right thigh
- Bellows pocket (fitted with stainless steel D-ring) on left thigh
- Kevlar® kneepads and seat area
- Fitted with black breathable socks (photographed with Rock Swim Boots)
- Internal elasticated adjustable braces



Merseyside Fire & Rescue



Merseyside Fire & Rescue



Merseyside Fire & Rescue



## RNLI



- Yellow 210D breathable Embratex fabric upper body
- Black 450D Aquatex fabric lower body
- BDM metal dry zip
- Neoprene neck and wrist seals
- Reflective piping sewn into seams
- Custom RNLI logo 4 colour printing
- Custom size zipped transporter pocket on left thigh
- Custom size bellows notebook pocket on right thigh
- Kevlar® kneepads and seat area
- Fitted with yellow Dunlop safety boots  
Conforms to EN345 safety boot standards
- Internal elasticated adjustable braces



## DROGHEDA RIVER RESCUE



- Navy blue 320D breathable Embratex fabric upper body
- Black 450D Aquatex fabric lower body
- BDM metal dry zip with protective flap
- Neoprene neck and wrist seals
- Reflective piping sewn into seams
- 25mm reflective bands on arms and legs
- 4 colour logo printing
- Custom reflective strips on upper arms
- Bellows pocket on right thigh
- Zipped transporter pocket (fitted with stainless steel D-ring) on left thigh
- Kevlar® kneepads
- Fitted with soft toe boots
- Internal elasticated adjustable braces





## MOUNTAIN RESCUE



- Red 320D breathable Embratex fabric upper body
- Black 450D Aquatex fabric lower body
- BDM metal dry zip with protective flap
- Neoprene neck and wrist seals
- Reflective piping sewn into seams
- 25mm reflective bands on arms and legs
- 4 colour logo printing
- Custom reflective strips on upper arms
- Light stick pocket on left arm
- Bellows pockets (fitted with stainless steel D-rings) on thighs
- Kevlar® kneepads and seat area
- Fitted with Latex socks with neoprene warmers
- Internal elasticated adjustable braces



## IRISH COASTGUARD



- Black 320D breathable Embratex fabric
- YKK Aquaseal dry zip
- Short style neoprene neck seal with Velcro fleece lined collar
- User changeable latex seals
- 25mm Reflexite® bands on arms and legs
- 4 colour logo printing
- ID number printed on upper right arm
- Velcro gusset pockets on thighs, with stainless steel D-rings above
- Waterproof zipped pocket on left thigh
- Kevlar® kneepads and seat area
- Fitted with safety boots  
Conforms to EN12568/98 safety boot standards



Avon Fire & Rescue

## Designed For You. Rear Entry Suits

Rear entry drysuits are very popular. Our first diving drysuit, manufactured in the 1970s, had this zip position.

Rear entry zips run between the shoulders and are preferred by those who want the zip in a more convenient location. Assistance is needed to close the zip.

We can modify these drysuits to match your requirements, for example fabric, colour, relief zips, embellishments, seal types, pockets and footwear.

Full details are on pages 12 – 17. Please contact us with your requirements and any questions you may have.

### Need inspiration?

See right and over the page for examples.

Drysuits are normally supplied with a storage bag (folds out for use as a changing mat) and a maintenance/repair kit.



### NORTH YORKSHIRE F&R



- Amber 450D Aquatex fabric upper body
- Black 500D Cortex fabric lower body
- BDM metal dry zip with protective flap
- Latex neck and wrist seals (wrist seals fitted with neoprene warmers)
- 4 colour logo printing
- Custom reflective strips on upper arms
- 25mm reflective bands on arms and legs
- Bellows pocket on right thigh
- Kevlar® kneepads and seat area
- Fitted with latex socks with neoprene warmers
- Internal elasticated adjustable braces



### HM COASTGUARD



- Yellow 320D breathable Embratex fabric upper body
- Black 450D Aquatex fabric lower body
- YKK Aquaseal dry zip with t-bar zip puller and protective flap
- Neoprene neck and wrist seals (seal protector on neck seal)
- 4 colour logo printing
- Custom reflective strips on upper arms
- 25mm reflective bands on arms and legs
- Reflective piping sewn into seams
- Interchangeable logo Velcro panels on upper arms
- Suit size printed in white on waist
- Kevlar® kneepads and seat area
- Fitted with latex socks
- Internal elasticated adjustable braces



St Caiman River Rescue, Ireland





## SURREY FIRE & RESCUE

- Red 320D breathable Embratex fabric upper body
- Black 450D Aquatex fabric lower body
- BDM metal dry zip with protective flap
- Neoprene neck seal and latex wrist seals
- 25mm reflective bands on arms and legs
- Reflective piping sewn into seams
- Reflective back panel
- 4 colour logo printing
- Custom reflective strips on upper arms
- Reflective back panel
- Kevlar® kneepads and seat area
- Fitted with latex socks with neoprene warmers
- Internal elasticated adjustable braces



St Caiman River Rescue, Ireland



## SUBWORX WRET NETHERLANDS

- Yellow 320D breathable Embratex fabric upper body
- Black 500D Cortex fabric lower body
- BDM metal dry zip with protective flap
- Latex neck and wrist seals
- 25mm reflective bands on arms and legs
- Removable Velcro light stick pocket on left upper arm
- Removable Velcro reflective strip on right upper arm (can be interchanged with light stick pocket)
- Kevlar® kneepads and seat area
- Fitted with safety boots  
Conforms to EN12568/98 safety boot standards
- Internal elasticated adjustable braces



Merseyside Fire & Rescue Training



## Designed For You.

### BIB/Waist Entry Suits

Wrap yourself in the latest drysuit technology with our unique pattern design waist/bib entry drysuits.

The zip sits around the waist and secures via a clasp at the front. Entering the drysuit is just as simple as a front entry.

We can modify these drysuits to match your requirements, for example fabric, colour, relief zips, embellishments, seal types, pockets and footwear.

Full details are on pages 12 – 17. Please contact us with your requirements and any questions you may have.

#### Need inspiration?

See right and over the page for examples.

Drysuits are normally supplied with a storage bag (folds out for use as a changing mat) and a maintenance/repair kit.



#### PORTUGUESE SAR

- Red 320D breathable Embratex fabric upper body
- BDM metal dry zip
- Latex neck and wrist seals
- 4 colour logo printing
- Light stick pocket on left arm
- Reflective strips on upper arms
- Bellows pocket on left thigh (fitted with knife loops)
- Kevlar® kneepads and seat area
- Socks same material as rest of suit
- Internal elasticated adjustable braces



#### SURREY FIRE & RESCUE

- Orange 450D Aquatex fabric upper body, same material in black for lower body
- BDM metal dry zip
- Neoprene neck and wrist seals
- 4 colour logo printing
- 25mm reflective bands on arms and legs
- Custom reflective strips on upper arms
- Light stick pocket on left upper arm
- Bellows pocket on right thigh
- Kevlar® kneepads and seat area
- Fitted with latex socks with neoprene warmers
- Internal elasticated adjustable braces



Northumberland Fire & Rescue



Bay Search & Rescue



### WARWICKSHIRE FIRE & RESCUE

- Amber 450D Aquatex fabric upper body
- Black 500D Cortex fabric lower body
- BDM metal dry zip
- Neoprene neck and wrist seals
- 25mm reflective bands on arms and legs
- Custom reflective strips on upper arms
- Light stick pocket on left upper arm
- Bellows pockets on thighs (right thigh with knife loops)
- Kevlar® kneepads and seat area
- Fitted with soft toe boots
- Internal elasticated adjustable braces



### SOUTH LAKES SEARCH & RESCUE

- Red 320D breathable Embratex fabric upper body
- Black 450D Aquatex fabric lower body
- BDM metal dry zip
- Neoprene neck and wrist seals
- 4 colour logo printing
- Custom reflective strips on upper arms
- Light stick pocket on upper left arm
- Bellows pockets on thighs
- Kevlar® kneepads and seat area
- Fitted with latex socks with neoprene warmers
- Internal elasticated adjustable braces

### BAY SEARCH & RESCUE



Bay Search & Rescue  
Morecambe Bay in quick sand



## Your Specification. Our Expertise

### I want a suit. What happens next?

Initially, your appointed contact will work with you to establish your needs.

Depending on your preference, we can visit you, you can visit us, or we can simply communicate by telephone or email.

Our design team will then work to ensure every detail is covered perfectly.

You will receive a copy of the drysuit design to check.

Only when you are happy with the design will the sample manufacturing process begin.

The drysuits will be made within an agreed timeframe and delivered to you. After test and evaluation, volume production will commence.

*The pdf shown right is an example of a customised suit developed for Drogheda River Rescue.*



## Drysuit Fabrics.

### Membrane

Our membrane fabric is a sandwich of three layers: a carrier layer of 40g polyester, 15-20 coats of butyl rubber solution and an outer layer of one of the listed materials below.

Drysuits can be made with one material or a combination, for example a 320D breathable Embratex (BE-320) upper body and a 450D Aquatex (AQT) lower body.

#### CHEMICAL RESISTANT ( AF-808 )



A rubber material with excellent resistance to chemical permeation and general pollutant ingress. High visibility and easy to clean.

#### 210D BREATHABLE EMBRATEX ( BE-210 )



Tested to EN ISO 14225-2:2005 for sea water resistance and EN ISO 15027-1:2002 for fire resistance, performance, dexterity and mobility.

#### 210D TRITEX NYLON ( TTX-210 )



Airtight soft touch fabric with high tear strength. Chemical, UV and cold resistant (-60°C).

#### 320D BREATHABLE EMBRATEX ( BE-320 )



Tested to EN ISO 14225-2:2005 for sea water resistance and EN ISO 15027-1:2002 for fire resistance, performance, dexterity and mobility.

#### 400D TRITEX NYLON ( TTX-400 )



Airtight soft touch fabric with high tear strength. Chemical, UV and cold resistant (-60°C).

#### 450D AQUATEX ( AQT )



Tightly woven fabric, proven to be incredibly resistant to abrasion and tearing. Very comfortable and flexible – popular with boat and rescue personnel who wear suits for long periods of time.

#### 450D NOMEX® DUPONT ( NMXT )



Very strong fabric. It has high heat resistance, is flame retardant and doesn't react with water.

#### 500D CORTEX ( CCH )



Over 30 years of trusted, rugged performance. Cortex has a Cordura® outer layer and is renowned for its hard-wearing properties. Often chosen for the bottom half of rescue drysuits.

## Custom Drysuits.

### Made to Your Specification

**Work with us to create the perfect drysuit.**

There is a range of options available to ensure your drysuit works effortlessly with you in your environment.

Standard options are listed in the following pages. If you do not see any options you are looking for, please contact us. We love a challenge and are normally able to help with most requests.





## 1. NECK & WRIST SEALS



Neoprene neck - standard inverted



Latex neck - standard



Latex neck with neoprene warmer



Neoprene neck with neoprene protector



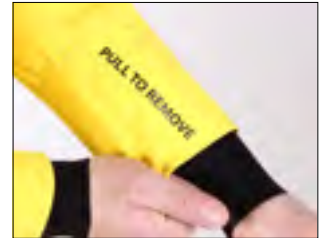
Neoprene wrist - standard



Latex wrist - standard



Latex wrist with neoprene warmer



Neoprene wrist with protective cuff  
Printed to assist seal removal

## 2. FABRICS

Please see page 12 for a full list of the fabric we offer with all our suits. If you need help choosing, please call us for advice.

## 3. ZIPS & 4. ZIP PROTECTION



Medium duty 8 pitch BDM metal dry zip



Standard YKK Aquaseal dry zip



YKK Aquaseal zip with T-bar zip puller



Front entry zip flap with Velcro closure



Rear entry zip flap with Velcro closure



Front entry "flush" zip protection



1. Waist / BIB entry, front view



2. Shows the Military version with the zip open.  
When the zip is closed the adjustable webbing ties are taken around the body and fastened at the front under the zip panel by a Fixloc buckle.

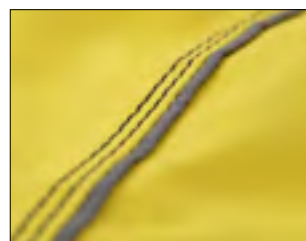
## 5. EMBELLISHMENTS



Reflective bands - 25 & 50mm



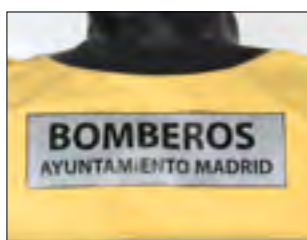
Reflexite prismatic bands - 25 & 50mm



Narrow / wide reflective piping



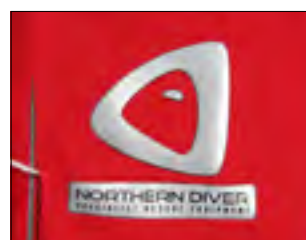
SOLAS tape reflective strips



Printed reflective panels



Encapsulated panels



Printed logos / crests



Removable badges

## 6. ARM POCKETS



Radio pocket - 50mm x 170mm



Lightstick pocket - 70mm x 180mm



Flexi-light stick pocket - 47mm x 125mm



Small bellows pocket - 100mm x 175mm



Glove pockets

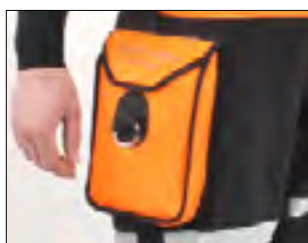


EPIRB pocket - 95mm x 160mm



Flexi-light sticks - see page 58

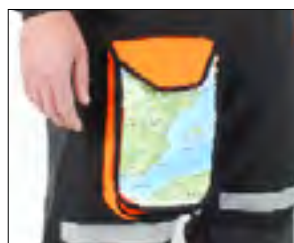
## 7. LEG POCKETS



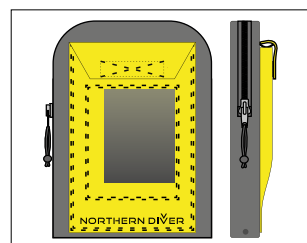
Bellows pocket - 145mm x 230mm



Transporter pocket - 150mm x 230mm



Bellows map pocket - 145mm x 230mm



Dual pocket - 150mm x 205mm



Notebook pocket - 145mm x 230mm



Gusset pocket - 180mm x 250mm



Pocket extra : stainless steel D-rings



Pocket extra : knife loops

## 8. KNEEPADS



Shaped Kevlar® kneepads



Integrated Kevlar® kneepads



Double layer reinforced kneepads

## 9. SEAT PROTECTION



Reinforced Kevlar® seat area



Double layer reinforced seat area

## 10. FOOTWEAR



Safety boots. EN 12568/98



Durable hard sole boots - type 1



Durable hard sole boots - type 2



Dunlop boots. EN345



Fully breathable socks



Latex socks - standard



Latex socks with neoprene warmers



Neoprene socks - standard



Tri-laminate socks  
Non breathable, very hard wearing

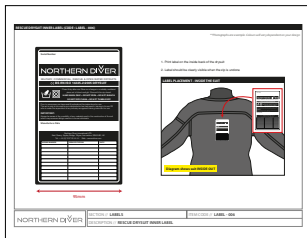


Breathable socks with Kevlar® protection

## STANDARD WITH MOST SUITS



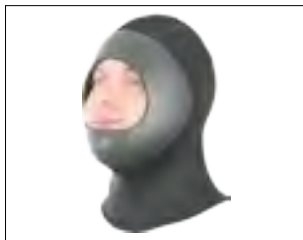
Adjustable elasticated internal braces



Inner suit labels



Internally taped and reinforced seams



Suit hood in a colour of your choice



Full customer support after purchase



Storage bag and changing mat.  
Changing mat shown in use (right)



Suit maintenance and repair kit includes:

1. Latex seals - 100mm of talc
  2. Neoprene seals - drysuit seal lubricant
- Beeswax zip ube stick  
Suit seal instant repair polymer  
Drysuit manual for instruction for use  
(Drysuits should only be used by trained, competent personnel)





## Neoprene Drysuit.

### Divemaster

The Divemaster is the first choice of active sport divers and the UK's major commercial diving schools.

Manufactured from a specially formulated 5mm hyper-compressed neoprene, the Divemaster allows freedom of movement and real diving flexibility, as well as being exceptionally hard-wearing.

Hyper-compressed is not just a name to increase product appeal. This is a full commercial process, requiring the use of a 500 ton heated press. Although this may sound excessive, this is a necessary process to achieve the highest possible standards in neoprene manufacturing.

The Divemaster can be used in conjunction with any undersuit in our range, for example the Thermalux® in mild European waters or Metalux® Temperate for more extreme diving conditions).

The Divemaster gives the user a comfortable environment when diving and can be pitted against the harshest of diving scenarios, such as ice diving and long duration cold water diving. Durability is increased by the heavy-duty pique nylon outer shell. Our unique Ti-Ax® Thermacote® heat reflecting system is under the inner lining inside the drysuit. With a host of premium features as standard, this drysuit really is a leader in reliability.

Available as a perfectly fitting made-to-measure suit, but with standard off-the-peg sizes, most divers will be able to make an instant splash.

### Features.

- Hyper-compressed neoprene
- 'Bonded for life' seams
- Rear entry BDM metal zip with protective flap
- Neoprene neck and wrist seals
- Northern Diver low profile Inflation and exhaust valves, located in standard positions
- Bellows pocket on right thigh
- Zipped transporter pocket on left thigh
- Kevlar® kneepads
- Fitted with durable hard sole boots
- Supplied with neoprene hood, storage bag (folds out for use as a changing mat) and a maintenance repair kit.



**“The DIVEMASTER has been the perfect suit for our students in every way.”**

*Dive Commercial International Inc - USA*



*The Divemaster has evolved over the years from a purely sport drysuit into a full commercial version, used all over the world - from the cold southern ocean off Chile to the depths of arctic Russia.*

Available in 17 standard sizes. Divemaster Sport also has a ladies pattern in 10 standard sizes.

# Sport Vs Commercial

## Sport Edition

Rear entry zip

Resin-injected hyper-compressed  
5mm neoprene

8 pitch medium duty BDM zip  
with protective zip flap

Kevlar® shoulder and knee protection

Neoprene neck and wrist seals  
(custom options available)

Bellows and transporter pockets  
(custom options available)

## Commercial Edition

Rear entry zip

Resin-injected hyper-compressed  
5.5mm neoprene

6 pitch medium duty BDM zip  
with protective zip flap

Kevlar® shoulder and knee protection,  
with additional silicone protection

Neoprene neck and wrist seals  
(custom options available)

Bellows and transporter pockets  
(custom options available)



### DIVERMASTER SPORT

DIVE 12 - SIZE

MENS: S, M, ML, MLR, MLT, MR, L, LR, LT, XL, XLR, XLT, XXL,  
XXLR, XXLT, XXXL, XXXLR

LADIES: S, M, ML, MR, MLR, L, LR, XL, XLR, XXL

### DIVEMASTER COMMERCIAL

DIVE - COM - SIZE

UNISEX: S, M, ML, MLR, MLT, MR, L, LR, LT, XL, XLR, XLT, XXL,  
XXLR, XXLT, XXXL, XXXLR

Norfolk Fire & Rescue Service



Website.

[www.divemaster-drysuit.com](http://www.divemaster-drysuit.com)



## Neoprene Drysuit.

### Origin

Origin Commercial is the developed version of Northern Diver's original neoprene drysuit.

It is incredibly popular with experienced divers around the world and remains a preferred choice of commercial divers.

This drysuit is ideal for advanced 'non-commercial' divers who regularly plan dives with little physical movement, long duration or extended deco stops.

The Origin is manufactured from 6.5mm neoprene, with a tough Armatex® outer shell and our Ti-Ax® Thermacote® heat reflective lining system.

It also features Kevlar® elbow, shoulder and knee protection, ensuring it will withstand years of action.

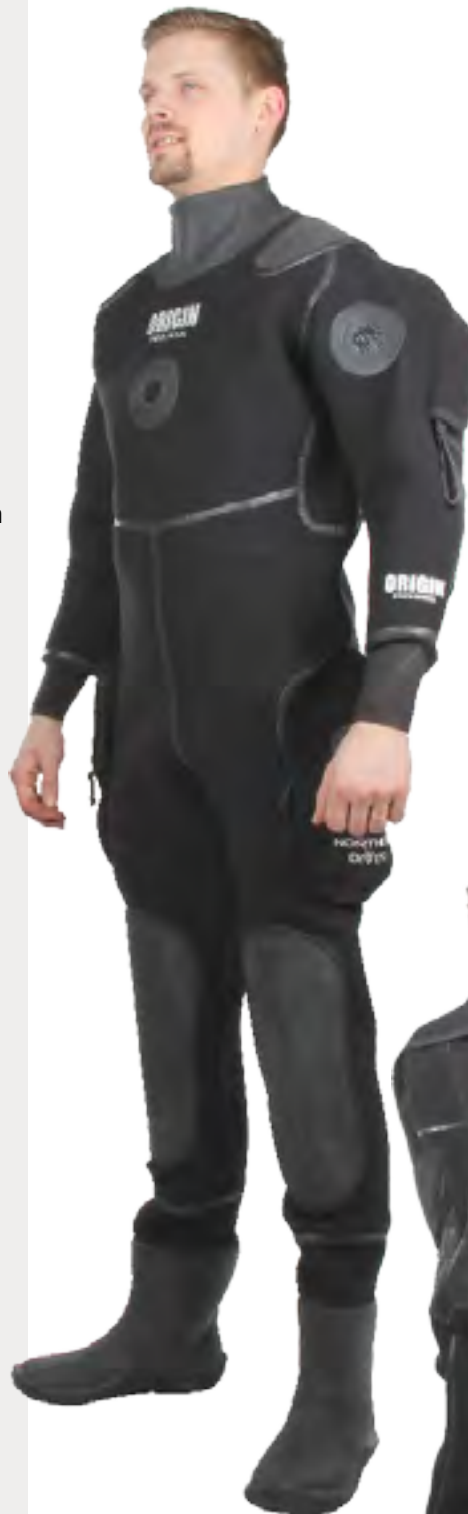
This drysuit's sizes are a wider fit than our standard drysuit sizes, allowing any combination of our undersuits to be used and covering all diving conditions.

The Origin is available off-the-peg with durable hard sole boots or steel toe and mid-sole foil safety boots. The safety boots conform to safety boot standard EN12568/98.

## The Origin is a proven no-nonsense Drysuit

### Suit Features.

- 6.5mm neoprene
- Rear entry heavy duty BDM metal zip with protective flap
- Neoprene neck and wrist seals
- Northern Diver low profile inflation and exhaust valves, located in standard positions
- 'Bonded for life' seams
- Liquid taped outside seams
- Zipped transporter pockets on thighs, each fitted with external stainless steel D-rings
- Kevlar® protection on shoulders, elbows and knees
- Overprinted seat area for non slip grip and abrasion protection



Norfolk Fire & Rescue



Photograph Name Here

Norfolk Fire & Rescue

#### ORIGIN

ORIGINCG - SIZE

UNISEX: M, ML, L, XL, XLT, XXL, XXXL



## Neoprene Drysuit.

### Voyager

Our Voyager drysuit is a cost effective neoprene drysuit, offering high-end quality at an entry-level price.

Manufactured from a supple 4mm compressed polymix neoprene, you can be sure of maximum comfort and flexibility when diving in a Voyager.

Neoprene drysuits like the Voyager are renowned for their natural thermal properties. Divers can remain warm in even the chilliest of waters as the Voyager can be worn with any Northern Diver undersuit. However much you feel the cold when diving, we have all bases covered.

From our Bodyline undersuit through to our Metalux® Arctic undersuit, we have the base layer to compliment your Voyager drysuit perfectly.

The water repellent resin-injected diamond weave outer fabric means that this neoprene drysuit can be pitted against even the harshest sport diving conditions.

Oversized knee patches give additional reinforcement. The suit also features a medium duty high specification metal dry zip. The zip is protected with a neoprene zip flap.

### Suit Features.

- 4mm compressed neoprene
- 'Bonded for life' seams
- Rear entry BDM metal zip with protective flap
- Neoprene neck and wrist seals
- Northern Diver low profile inflation and exhaust valves, located in standard positions
- Zipped transporter pocket on left thigh
- Protective knee overprinting
- Internal braces
- Fitted with durable hard sole boots

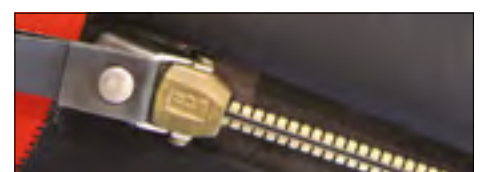
VOYAGER

ARCTIC  
EXTREME  
Supervent Hood

TÜV Rheinland

BONDED  
FOR LIFE  
SEAMS

Available in Ladies Fit



#### VOYAGER

VOYAGER - SIZE

MENS: M, ML, MLR, MLT, MR, L, LR, XL, XLR, XLT, XXL, XXLR, XXXL, XXXLR  
LADIES: S, M, ML, MR, MLR, L, LR, XL, XLR



## Membrane Drysuit.

### HID

Our top of the range membrane drysuit, flexes in tune with your body when diving.

The HID is manufactured from ultra hard-wearing black Aquatex fabric.

Don't expect a considerable amount of excess material, a usual feature of a membrane drysuit, as the Constant Fit Tension Flex system on this technical tri-laminate drysuit fits closely while moving in tune with the diver's body.

As the HID is front-entry, the Constant Fit Tension Flex system comes in handy when putting on and removing the drysuit. When completing these processes, the YKK high-compression Aquaseal zip isn't put under excessive pressure, nor the diver's neck.

The HID has new and useful features. With items such as a dive computer in mind, we have added our recently developed Anti Slip Equipment Anchor to each wrist.

Owing to the anti-slip material used, the anchor helps to keep your equipment secure and in position for the duration of the dive.

A pocket for our popular new Flexi-Light is just below the shoulder on the side of the left arm.

The HID has a zipped transporter pocket, with an integrated diver's knife pocket, on the side of the right thigh. In the same position on the left thigh, there is a Velcro bellows pocket.

#### HID

HID - SIZE

UNISEX: S, M, ML, MR, MLR, MLT, L, LR, XL, XLR, XLT, XXL, XXLR, XXXL



ARCTIC  
EXTREME  
Supervent Hood



### Suit Features.

- Black Aquatex tri-laminate fabric
- Constant Fit Tension Flex system
- 'Bonded for life' seams
- Front entry YKK high compression Aquaseal zip
- Neoprene neck seal (with neoprene warmer) and latex wrist seals
- Northern Diver low profile Inflation and exhaust valves, located in standard positions
- Zipped transporter pocket (with integrated knife pocket) on right thigh
- Bellows pocket on left thigh
- Flexi-light stick pocket on right upper arm
- Adjustable and removable crotch strap
- Kevlar® kneepads
- Fitted with durable hard sole boots



## Membrane Drysuit.

### Vortex V2

Our original Vortex drysuit was used extensively by divers and dive schools across the UK and abroad.

The vortex is now known as the 'workhorse' of our range of tri-laminate Drysuits.

The Vortex V2 has a tailored fit and an elasticated back-panel. This reduces air pockets and improves the overall look.

Topped off with striking light reflective overprinting, it is considerably more comfortable and stylish than traditional membrane drysuits.

The drysuit is manufactured using an innovative pattern and polyester-butyl laminated fabric.

With every seam triple-glued and rubber taped, this drysuit really does live up to its 'robust' reputation.

The Vortex V2 can be used with a variety of undersuit types, making it ideal for many different diving environments.

### Suit Features.

- Tri-laminate fabric
- 'Bonded for life' seams
- Rear entry BDM metal zip (front entry available)
- Neoprene neck and wrist seals
- Northern Diver low profile inflation and exhaust valves, located in standard positions
- Velcro close pocket on left thigh with knife attachments
- Fitted with neo-vulcanised hard sole boots



#### VORTEX V2

VORTEX-V2-GENDER-SIZE or VORTEX-V2-BLUE-GENDER-SEALS-SIZE

**MENS & LADIES: S, M, ML, MR, MLR, MLT, L, LR, XL, XXL, XXLR**  
(SIZES WILL VARY DEPENDANT ON STOCK AVAILABLE)





## Specialist Drysuit.

### Storm Force 4

Our Storm Force 4 (F4) is the breathable tri-laminate drysuit that evolved from our popular Storm Surface Drysuit.

This latest model has neoprene neck and wrist seals, manufactured from our super-stretch soft neoprene. These seals are very comfortable and durable.

The drysuit also features heavy-duty latex dry socks. These are designed to be used with our Wet Boots, Rock Swim Boots or similar in-water footwear.

The new F4 features the latest light reflective technology. Super high visibility logos are on the chest, upper back and arms. This is an essential safety feature, especially if the drysuit will be used at night, in poor light conditions or with impaired visibility.

Available in 210D or 320D breathable Embratex fabric, with a choice of red/black or yellow/black.

The 210D model is a lighter weight option, which is one of the most flexible drysuits on the market today. The 320D model offers most of the same features as the 210D model. However, this suit is much more durable.

Available in 210D and 320D fully breathable embratex fabric in a choice of colours

## Suit Features.

- Neoprene neck and wrist seals
- Double layer legs / seat area
- Reflective logos
- BDM dry zip
- Front and rear entry zip options
- Elasticated waist
- Internal braces : standard
- Fitted with latex socks
- Supplied in drawstring bag



#### REAR ENTRY SF4

F4 WILDWATER DRYSUIT SIZE

S, M, ML, L, XL, XXL, XXXL

#### FRONT ENTRY SF4

F4 WILDWATER F/E SIZE

S, M, ML, L, XL, XXL, XXXL



Colour options:  
Red/black (shown above) or yellow/black (shown left)

Photo: Jackie on her water rescue course



## Specialist Wading Suits.

### 2 Piece Flood Suit

The 2 Piece Flood Suit has been specially developed with UK rescue teams for low level flooding, wading, pumping operations and mud rescue.

This flexible suit is designed to offer a good level of waterproof protection. The two piece design gives the user choice on how the suit is worn, depending on the climate and applications.

The suit has been tested in various rescue applications. It is in service with many rescue organisations around the UK, used as an alternative to drysuits when they are not absolutely necessary.

Fitted with reflective piping and SOLAS approved reflective tape. All internal seams are glued and hand taped.



#### Top Piece

- Neoprene neck with adjustable Velcro tab
- Adjustable elasticated braces
- Lightstick pocket fitted to left arm
- Reflective panels on both arms
- Neoprene wrist seals
- Adjustable neoprene waistband

#### Bottom Piece

- Elasticated adjustable waist
- Quick release adjustable belt
- Splash proof zip
- Gusseted zipped chest pockets
- Elasticated ankle gaiters
- Fitted with 5mm dry neoprene socks

FLOOD - SUIT - SIZE

S, M, L, XL, XXL

## Specialist Drysuits.

### Responder Suit

The Responder drysuit is made for the first responders to an incident.

It is suitable for medium duty applications, such as bank searches and wading.

Manufactured from a medium membrane fabric.

This drysuit is not intended for heavy duty applications.



#### Suit Features.

- Manufactured from a lightweight membrane
- Taped internal seams
- Latex neck and wrist seals
- Rear entry YKK Aquaseal zip with protective cover
- Reinforced double layer seat, knee and shin protection
- Elasticated back panel and ankle gaiters
- Light stick pocket fitted to left arm
- Narrow reflective piping
- SOLAS approved reflective tape
- Waterproof latex socks

RESPONDER - SUIT - SIZE

S, M, L, XL, XXL

## Specialist Drysuits.

### Boating Ops Suit

Our Breathable Boating Operations Drysuit is designed to keep the user dry if they enter the water. The seals are manufactured from super-soft neoprene and are exceptionally comfortable.

For extra comfort, the drysuit features a fleece-lined collar, adjustable wrists and ankle gaiters.

This drysuit was designed with the British Ministry of Defence and Police boating operations teams. It is manufactured to a very high specification and can be customised on request. Can be worn with all Northern Diver boots.

### Suit Features.

- 320 Denier nylon outer fabric with additional waterproof treatment
- TPU membrane inner lining with tricot mesh
- Removable badges on chest and upper left arm
- Neoprene neck and wrist seals
- (materials can be customised on request)
- Narrow reflective piping
- ID card pocket on shoulder
- Fleece-lined collar
- Fold-away reflective hood
- Front entry high compression YKK Aquaseal zip
- Internal braces for optimum fit
- Fly zip with protective cover
- Adjustable protective covers on wrist seals
- Kevlar® reinforced seat and oversized kneepads
- Bellows pockets on both thighs, ID card pocket fitted on right pocket
- Velcro pockets on upper arms
- Dry pockets on forearms
- Breathable tri-laminate socks
- Adjustable ankle protectors



Velcro closing collar 'flap'



Integrated high visibility hood



Glove pockets fitted to both arms



Removable identification patches



Release zips with Velcro adjustments

Complete with internal labels and drysuit carry bag



## Specialist Suits.

### Flotation Suit

Our Flotation Suit is a versatile garment that is suitable for various tasks performed near water when keeping warm and protection from the water are essential.

The suit is manufactured from a waterproof breathable membrane and has adjustable anti-flush straps on the wrists and ankles. If the user falls into the water, the suit will provide buoyancy (50N) and protection against cold water shock and hypothermia. It is suitable for use in temperatures ranging from -40°C to 10°C.

When the suit is worn, comfortable cuff and neck areas, ventilation points and a high performance wicking lining ensure it remains comfortable.

Our Flotation Suit is available in a choice of colours. Subject to order quantity, we can also manufacture bespoke suits to your requirements.

**BS EN ISO393:1993 92.18**

### Suit Features.

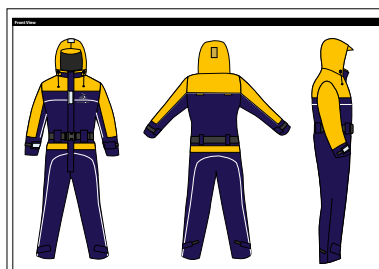
- Breathable outer fabric
- Specially developed lining for wicking performance
- Inherent buoyancy in excess of 50N
- Provides a degree of thermal protection against hypothermia / cold water shock
- Velcro close collar
- Attached hood
- Neoprene anti-flush adjustable wrists
- Ankles secured with easy grip pull tabs
- Reflexite prismatic tape
- Reflective piping sewn into seams
- Air escape eyelets under chest flaps
- Underarm and back ventilation
- Fleece lined waterproof pockets



Old stock flotation suits in yellow are available in sizes M and ML. This is a clearance item, ring us for a special price.

The flotation suit can be specified to your own requirements.  
(Minimum quantity order required)

**BS EN ISO393:1993 92.18**



#### FLOTATION SUIT

FLOTATION - ARCTIC - SIZE

S, M, ML, L, XL, XXL



## Specialist Contaminated Water Drysuit.

### Thor

Our Thor drysuit is manufactured from a vulcanised polymer created from a mix of high-grade rubber and EPDM.

Vulcanised laminated polymers are carried on a multidirectional 4-way-stretch knitted polyester, which gives excellent strength and durability.

The Thor is suitable for commercial diving applications but is also an excellent option for military and rescue purposes.

The Thor has been thoroughly tested at the Austin Institute in Texas, USA. All Thor drysuits are CE approved and conform to the latest EEC PPE directive regarding drysuits.

Our quality control management conforms to BS EN ISO 9001:2008, ensuring that all Northern Diver products are of the highest quality and manufacturing standards.

Independent tests show that the Thor drysuit is resistant to chemical permeation. Full details are available on request.

Thor drysuits can be manufactured to custom specifications, including fitting items such as reflective overprinting, extra reinforcement and pockets.



Suitable for toxic incidents or water where chemical or biological non-permeability is essential.  
Suitable also for toxic body recovery.

The drysuit can easily be washed down after use.



#### THOR 1000G

1000 - THOR - SIZE

S, M, ML, MLR, L, LR, XL, XLR, XXL, XXLR

#### THOR 1600G

1600G - THOR - SIZE

S, M, ML, L, XL, XXL, XXLR

Website.

[www.northern-diver-thor.com](http://www.northern-diver-thor.com)



\* Thor suit shown without valves fitted  
Left : THOR 1000G Right : THOR 1600G



Neil Tordoff, Military & Commercial Sales Director, Bucharest, Romania

## Specialist Contaminated Water Drysuit.

### Thor - Options Available

Thor drysuit neck/wrist seals and boots can be changed. This includes a wide range of options, including lightweight swimming boots, wide-fitting boots for static commercial diver operations and safety boots with steel toe caps and mid-sole foil. Neck yokes, additional pockets, dry glove systems and convenience zips are also available.



#### NECK YOKES

The Thor range of rubber drysuits is compatible with the industry standard diving helmet neck yokes, including Desco, KMB, AH & Genesis models.



#### BEANIE HOOD

The Beanie Hood offers protection from the cold when wearing with a Latex Hood. Complete with comfortable chin strap.



#### FIXED CUFF SYSTEM

The Hot Crabber cuff / glove system has excellent resistance to acids, alkalis, abrasion, chemicals, cutting oils and petrol.



#### LATEX HOOD

Available as a separate item or can be attached to the suit with an optional Beanie Hood. Hood is close fitting - ensures there is no water ingress whilst diving.



#### SKIN / SKIN HOOD

Ensures there is a smooth neoprene skin around the face, which will seal when using a full face mask. Skin / Skin Hood works in conjunction with the AGA mask.



#### DRY GLOVE SYSTEM

For use with both latex and neoprene wrist seals. The unique double-safety locking mechanism gives simple and fast engagement or release, without assistance.



#### LOCKING CUFF DUMP

A cuff dump with a simple and swift opening/closing operation. It turns 45 degrees from open to closed.



#### VALVES

Inflation and exhaust valves. These contaminated water valves are specially designed to be chemical, impact and heat resistant.



## Thor Boot Options.

### Reinforced Safety Boots

Ergonomically designed underwater safety boots, offering chemical and biological penetration protection, plus added impact and sharps penetration resistance.

- 1 EPDM rubber mix pique lining
- 2 Extra EPDM rubber layer
- 3 Neoprene insulation
- 4 Composite toecap
- 5 Rubber sole
- 6 Flexible stainless steel mid-sole foil
- 7 EPDM rubber mix



#### SAFETY OVER BOOTS

CODE : THOR - OVERBOOT

One Size Fits All. Composite Toe Caps  
Toe Cap Tested To EN 12568: 2010



#### SAFETY BOOTS

CODE : THOR - BOOT

SIZES : 7, 8, 9, 10, 11, 12, 13, 14  
Toe Cap Tested To EN 12568: 2010



#### RUBBER BOOTS

CODE : THOR - SOFT - BOOT

SIZES : 7, 8, 9, 10, 11, 12, 13, 14  
Toe Cap Tested To EN 12568: 2010



## Boots Supplied.

### All toe caps tested to EN 12568 : 2010

Rubber boots come as standard with the 1000G Thor.

Safety boots come as standard with the 1600G Thor.

You can also opt for our overboots. Lead Insoles can be added to these for extra weight and buoyancy control.

#### LEAD INSOLES

Insoles made from solid lead. For use with Northern Diver commercial underwater 'safety' overboots. Each insole weighs 2.6 kg



Thor.

**Independent test results show the Thor drysuit is resistant to chemical permeation.**



## PERMEATION TEST RESULTS

			ASTM F739 – 99A	
			AVERAGE NORMALISED	
			BREAKTHROUGH TIME ( MIN )	
			0.1 g/cm <sup>2</sup> /min	
			NORTHERN DIVER THOR	
CHEMICAL	% CON	% MAX	MATERIAL ONLY	MATERIAL SEAM
		WATER		
		SOL.		
ACETONE	10	100	> 480	> 480
ACETONITRILE	10	100	> 480	> 480
AMMONIA SOLUTION	10	100	> 480	> 480
CARBON DISULFIDE	99	0.2	11	6
DICHLOROMETHANE	100	1.3	13	8
DIETHYLAMINE	10	82	> 480	> 480
DIMETHYLFORMAMIDE	10	100	> 480	> 480
ETHYL ACETATE	8.7	8.7	> 480	> 480
HEXANE	0.014	0.014	> 480	> 480
METHANOL	10	100	> 480	> 480
NITROBENZENE	100		7	5
SODIUM HYDROXIDE	10	50	> 480	> 480
SULFURIC ACID	10	100	> 480	> 480
TETRACHLOROETHYLENE	0.015	0.015	246	164
TETRAHYDROFURAN	10	100	127	77
TOLUENE	0.05	0.05	> 480	> 480
ASTM OIL NO.1	10	Not Sol.	> 480	> 480
ASTM OIL NO - 3	10	Not Sol.	> 480	> 480
LIQUID B 70% LSOCTANE 30%	100	Not Sol.	71	59
LIQUID C 50% LSOCTANE 50%	100	Not Sol.	59	34

### CHEMICAL PENETRATION TESTS

The majority of divers using Thor drysuits in contaminated water require information regarding the drysuit's protective qualities to be made available. Thor suits underwent permeation testing under worst case scenario conditions – 100% chemical exposure for the entire length of the test.

Although these test conditions are unlikely in any chemical diving environment, the results demonstrate the protection offered under most normal circumstances.

### PERMEATION TEST RESULTS

The permeation values are based on the time it takes for the chemical to permeate the suit material. The permeation test is performed up to 480 minutes. The reports that indicate greater than 480 minutes means that no chemical was detected above 0.1 mg/ min/cm<sup>2</sup> for 8 hours' duration.

### ACTUAL BREAKTHROUGH VS NORMALIZED BREAKTHROUGH

Actual breakthrough is reported in minutes and occurs when initial breakthrough is detected. Each chemical tested has unique characteristics and minimal detectable limits. For example: if a chemical has a minimum detectable limit of 0.059 mg/ min/cm<sup>2</sup>, actual

breakthrough is reported when challenge chemical concentrations reach 0.059 mg/ min/ cm<sup>2</sup> or greater. Normalized breakthrough occurs when challenge chemical breakthrough concentrations reach 0.1 mg/ min/ cm<sup>2</sup> or greater (AaSTMm Ff739).

### MAXIMUM AND MINIMAL DETECTABLE RATES

This indicates the maximum level of chemical detection using the permeation test system. The minimal detectable rate is the lowest rate of permeation that is detectable with the permeation system.

### STEADY STATE PERMEATION

The constant rate of permeation that occurs after breakthrough when the chemical contact is continuous and all forces affecting permeation has reached equilibrium

### WHEN DIVING IN POLLUTED, CONTAMINATED OR GENERALLY ABNORMAL ENVIRONMENTS

Northern Diver's Thor drysuit has been developed and tested for use in these conditions and as such should be regarded as an integral component of your diving plans. Diving in contaminated environments has the potential to be extremely dangerous.

**All information supplied within this brochure intended purely for informative purposes only. It is not a substitute for proper training and should not be regarded as so. The information in the brochure is not a substitute for applicable regulations or standards and is not published as legal advice or opinion in any way. Thor drysuits have been tested to standard ASTM F 739.**

### DECONTAMINATION

After exposure to a contaminated environment, the Thor drysuit must be decontaminated, ensuring that all contaminants have been removed from the drysuit.

**Diving in contaminated environments should not be undertaken by those without the highest level of training. All risks should be understood prior to any contaminated environment diving, with all risks carefully planned for and the utmost care taken.**

Follow Link.



## Drysuit Components.

### Additions & Accessories To Your Drysuit

Northern Diver has a range of products to help with your drysuit maintenance needs. Should you require an item that is not listed, please contact us.



#### COMMERCIAL VALVE

Double Mushroom Exhaust Valve  
VALVE-ND-EXHAUST-COMM



#### EXHAUST VALVE

VALVE-ND-EXHAUST



#### INFLATION VALVE With CEJN Spigot

Available with standard pignose / guyson hanson / seaquest style spigot.  
Or commercial CEJN spigot.  
VALVE-ND-INFLATOR



#### CJEN HOSE

NDA-NEW-CJEN HOSE  
SIZE : N / A



#### 40" STANDARD HOSE

NDA-NEW NDA 40" HOSE  
SIZE : 40"

#### 33" STANDARD HOSE

NDA-NEW NDA HOSE STANDARD  
SIZE : 33"



Front view above.  
Other views on page 29

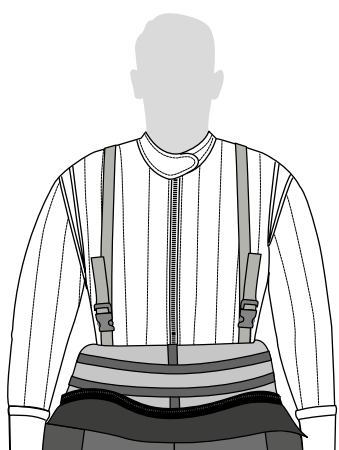
#### LOCKING CUFF DUMP

CODE  
SIZE : ONE



#### BLACK HOSE PROTECTORS

HOSE PROTECTOR BLACK (or)  
AC-11-2 (or) AC-11-4-BK



#### INTERNAL BRACES

BRACES  
SIZE : N / A



#### DRYSUIT HANGER

HANGER-DRYSUIT  
SIZE : N / A



#### WETSUIT HANGER

HANGER-WETSUIT  
SIZE : N / A



#### SUIT SEAL

SUIT SEAL REPAIR SET  
SIZE : 21G



#### SEAL LUBRICANT

SEAL-LUBRICANT  
SIZE : 200ML



#### SILICONE SPRAY

SILICONE-SPRAY  
SIZE : N / A



#### TALC

SEAL SAVER  
SIZE : 100G



#### ZIP WAX

ZIP LUBE  
SIZE : N / A



#### BIO WRIST SEAL

SEAL-WRIST-BIO-BLACK  
[www.ndiver.com/products/Apollo-BIO-Wrist-Seal](http://www.ndiver.com/products/Apollo-BIO-Wrist-Seal)



#### BIO NECK SEAL

SEAL-NECK-BIO-BLACK-(SIZE)  
[www.ndiver.com/products/Apollo-BIO-Neck-Seal](http://www.ndiver.com/products/Apollo-BIO-Neck-Seal)



#### LATEX NECK SEAL

SEAL-N-(SIZE)  
SIZE : N / A



#### LATEX WRIST SEAL

SEAL-W-B-(SIZE)  
SIZE : N / A



#### DURABLE HARD SOLE BOOTS

TYPE 1 (LEFT) : DACOR BOOT - 'SIZE'  
TYPE 2 (RIGHT) : BOOT - DIVE - 'SIZE'



#### SAFETY DRYSUIT BOOTS

SAFETY BOOT 'SIZE'  
SIZE : N / A



#### LATEX SOCKS

SOCKS-LATEX-(SIZE)  
SIZE : N / A



## User Replaceable Wrist Seals.

### Lock in wrist seals or gloves

The ring system is retro fitted by gluing to the end of the drysuit arm.

This unique glue-in ring system is easily fitted to any drysuit.

This allows you to fit replacement wrist seals or to lock a dry glove over your wrist seal with minimal fuss.

Seals & gloves are locked by means of a high quality 5mm O-ring. Ansell dry gloves are recommended (shown left)

CODE N/A





## R&D Suit Development. Custom Tailoring & Repairs

Available for stock size drysuits.  
We will happily repair drysuits  
of any brand, but priority will  
be given to Northern Diver  
customers.

### Need an instant repair?

A fast track service is available.  
Contact us on the telephone  
number below for more  
information.

Waiting time can vary dependent  
on our workload. Turnaround can  
sometimes be as fast as one day.

### Repairs Department

+44 (0) 1257 25 69 37

**With over 40 years' experience, our  
repairs and alterations department  
has your drysuit in safe hands.**

- Inflation valve position can be changed.
- Exhaust valve position can be changed, or it can be replaced with a cuff dump.
- Boots are available in a variety of sizes and styles.
- Arms and legs can be shortened or lengthened.
- Neoprene neck and wrist seals can be replaced with latex seals and vice versa.
- Neoprene stock size suits can be tapered to fit.

### Other Suit Options :

**Kevlar® seat pad    Stainless D-ring**  
**Hood attached    Convenience zip**  
**External zip flap    Internal braces**  
**Reflective tape    Fly / relief zip**  
**Arm & leg pockets**

Check availability on specific suits.  
Most options are subject to an additional charge.

### Design Your Own.

#### Made To Measure System

### We want you to purchase the perfect drysuit!

You can design numerous elements on  
your drysuit.

Choose material, pockets, boots,  
zipper and seals that fit your unique  
specification. To complete your drysuit,  
personalise it with your company logo.

If you cannot find  
what you are looking  
for, we always enjoy  
a challenge.

Contact us to discuss  
how we can help you.



*Louise Ball, Suit Development*

## Thermal Layers.

### Metalux® Undersuit

Metalux® is one of the most lightweight, high-performance insulating materials available.

It is designed to reflect thermal radiation and reduce air movement, even when wet or compressed.

It retains its thermal integrity throughout the life of the garment, which is hard-wearing and machine washable.

## Features.

- Lightweight
- Fleece-lined
- Quick-drying design
- Bacteria and fungus resistant
- Pockets on hips
- Elastic foot stirrups

### Metalux Temperate.

**100 / 200 gsm**

This model is most commonly used for UK summer diving conditions and/or with drysuits that have thermal properties.

### Metalux Arctic.

**200 / 300 gsm**

This thicker variant is suited to more extreme diving conditions and/or drysuits without thermal properties.

## Review \* \* \*

### Daryl Townsend - Flood Team

Although we thought we had good undersuits, boy were we wrong....

Numb leg, frozen feet etc...

This year we had the Northern Diver Metalux Temperate undersuit and I could actually feel my legs at the end of a long day in the north Wales water. 1 degree C temp, at best and I was almost sweating...

The suits are fantastic. Many thanks to Craig and the Northern Diver team.



*\*Styles may vary dependent on size required*

**METALUX**  
TEMPERATE

**METALUX**  
ARCTIC



Chest pocket



Hip pockets



Lower arm stretch panels



Ankle / foot stretch panels



Inner fleece fabric



METALUX - TEMP - SIZE

S, M, ML, MLR, MR, MLT, L, LR, LT, XL, XLR, XLT, XXL

The Metalux® undersuit's layers are shown left. Working from the top down:

1. 3mm X-otherm fleece/fleece pile lining - sits next to skin.
2. Metalux® - multi facet film strips, which reflect heat back to body and shield from the cold
3. Soft hollow fibre - acts as an insulator
4. Nylon shell with Teflon® coated outer

METALUX- ARCTIC or METALUX 330g ARCTIC

S, M, ML, MLR, MR, MLT, L, LR, LT, XL, XLR, XLT, XXL, XXXL, XXXL, XXXL

## Warmth & Comfort.

### Thermalux®

A high tech fleece/Lycra® mix for superb insulation and flexibility. Thermalux® undersuits offer a lightweight solution to keeping warm.

The microfibre and fleece layers retain body heat, without excessive bulk.

Flexible panels in the lower back, shoulders, cuffs and feet give exceptional freedom of movement, without sacrificing warmth.

Ergonomically designed foot stirrups ensure the garment stays in position during use, keeping material movement to a minimum and avoiding uncomfortable creasing between the outer garment and your skin.

## Suit Features.

- Breathable microfibre outer shell
- Super absorbent micro fleece inner lining
- Ultra lightweight and quick-drying
- Bacteria and fungus resistant
- Elasticated Lycra® panels
- Thermalskin cuffs
- Thermalskin foot stirrups
- Pockets on the hips
- Two way zip

## Review \* \* \*

### Perfect - Chris Higgins

I use Northern Diver's Divemaster Evolution 12 drysuit and found the addition of their Metalux Temperate great in winter, but not needed in summer!

In water warmer than 15 degrees I only need to use a t-shirt and a pair of joggers.

When the water is between 10 and 15 degrees Northern Diver's Thermalux® undersuits is perfect for me and the one piece design is very simple and comfortable to use.



"We are exceptionally pleased with the Thermalux® undersuit and have no hesitation in recommending N.Diver and this suit to any diver or SAR unit."  
David O'Mahony  
Derrynane Inshore Rescue unit

**We recommend a Bodyline and Thermalux® undersuit for diving in average UK weather conditions.**



### THERMALUX

THERMALUX - SIZE

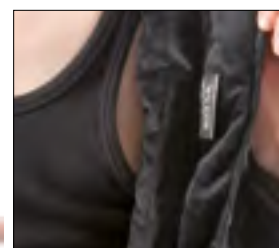
XS, S, M, ML, MLR, L, LR, XL, XLR, XXL, XXXL



Elastic thumb loops and stretch panels on the cuffs



Under arm stretch panels



Inner fleece fabric



Hip pockets



Non mag rubber zip pullers  
Ankle / foot stretch panels





## Thermal Skin. Bodyline Undersuit

Can be worn as a first layer in conjunction with the Northern Diver range of Metalux® undersuits for more extreme environments.

The Bodyline has proved itself to be an incredibly versatile product. It is not only used by the diving community, but also in many other walks of life where keeping warm is essential.

Many divers are now using their Bodyline as an additional layer of insulation beneath their wetsuit. This is proving to be very successful with those who want to wear their semi-dry wetsuits for longer durations, deeper dives or in cooler waters.

Cavers have also adopted the Northern Diver Bodyline for use beneath caving suits for comfort and warmth on long trips underground.

Even members of some mountain rescue teams wear this undersuit for cold nights on the hills.



### BODYLINE SOCKS

MOD - BODY - SOCK - SIZE

S, M, L, XL

## Suit Features.

- Close fitting - fits like a “second skin”
- Manufactured from moisture wicking fleece & super stretch Lycra®
- Ideal base layer for surface use
- Breathable fabric
- All black colour

### BODY LINE

MOD - BODYLINE - U/SUIT - SIZE

S, M, ML, L, XL, XXL

## Three Piece System.

### Arctic Base

Consisting of :

1. Fleece thermal top
2. Thermal trousers
3. Thermal socks.

Arctic Base is manufactured from thick ultra thermic fleece. Thicker fleece is present where extra insulation is needed.

Crafted seams on the undersuit and socks ensure the garments remain comfortable.

The trousers feature a wide, comfortable elasticated waistband, with drawstring and ergonomic foot pockets for a great fit.

The fleece sock has a flexible comfort panel on the front and is tailored to the shape of the feet, making them snug and a pleasure to wear.

- Thicker fleece for efficient insulation
- Crafted seams for maximum comfort
- Ergonomic foot pockets
- Fleece socks with flexible comfort panel on the front



ARCTIC - BASE - U/S - SIZE

S, M, ML, L, XL, XXL, XXXL

# ARCTIC BASE

## X - TREME THERMAL PROTECTION

## Thermal.

### Rash Vests

The first layer of luxury.

The Northern Diver Rash Vest increases comfort between you and your undersuit or wetsuit, wicking moisture away from your skin, increasing comfort and reducing the chill factor.

This base layer, next to your skin, is one of the most important layers in managing heat loss.

Rash Vests allow your undersuit or wetsuit to glide with your body movements, making it helpful when getting into and out of these garments.

Photo right shows long sleeved rash guard.



### Features.

- Available in long and short sleeves
- Colours vary dependent on stock
- Can reduce salt water irritation
- Slip in and out of suits easier
- Wicks sweat away from your body
- Suitable for most water activities

#### SHORT SLEEVE

RASH VEST - SIZE

**S, M, L, XL, XXL**

#### LONG SLEEVE

RASH VEST - SIZE

**S, M, L, XL, XXL**

## Thermal Footwear.

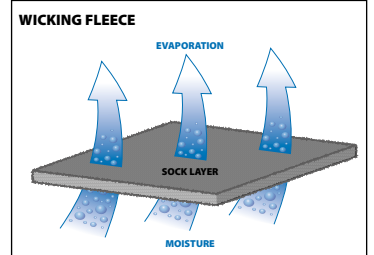
### Hot Sox

These are made from moisture-wicking fleece, keeping your feet warm and comfortable.

The socks are double sided and flatlock stitched - no raised seams to cause discomfort.

They have a special heel protector and are cut to fit perfectly.

Moisture is always present inside any diving drysuit, often produced by the diver's body. Hot Sox wick this moisture away from the skin to keep you comfortable.



#### HOT SOX

HOTSOX - SIZE

**XS S M L XL**

Available in sizes:

**XS:** 3-4 (36-37) **S:** 5-6 (38-39) **M:** 7-8 (41-42)

**L:** 9-10 (43-44) **XL:** 11-13 (45-46)



## Military & Commercial 2 Piece Wetsuits.

### Tropical & Temperate

#### Tropical shortie over jacket

3mm super-stretch neoprene garment with short arms and legs  
YKK non magnetic zip  
Suitable for use in tropical and similar conditions above 18°C  
Non chafe collar  
Flat-lock stitch

#### Tropical long john

5mm super-stretch neoprene garment with long arms and legs  
Knee and elbow pads for protection  
YKK non magnetic zip  
Suitable for use in tropical and similar conditions above 18°C  
Smooth skin floating collar  
Glued and blind stitched

#### Temperate shortie over jacket

5mm super-stretch neoprene garment with short sleeves and legs  
YKK non magnetic zip  
Suitable for use in temperate and similar conditions above 18°C  
Non chafe collar  
Flatlock stitched

#### Temperate long john

5mm super-stretch neoprene garment with long arms and legs  
Knee and elbow pads for protection  
YKK non magnetic zip  
Suitable for use in tropical and similar conditions above 18°C  
Smooth skin floating collar  
Glued and blind stitched

2 piece semi-dry wetsuit with a separate hood. Normally used with a rash vest and neoprene socks. Wetsuits conform to non magnetic requirements and are labelled accordingly.



#### TROPICAL & TEMPERATE WETSUITS

MOD-TROP-LONG-SIZE    MOD-TROP-SHORT-SIZE  
MOD-TEMP-SHORT-SIZE    MOD-TEMP-SLEEVED-SIZE

S, M, ML, L, XL, XXL,



#### SEARCH & RESCUE WETSUIT

CODE : MOD-SAR

S, SW, M, MW, MEW, L, LW, XL, XLS, XXL, XXLS, XXLES ( W = WIDE, E = EXTRA, S = SHORT )

## SAR 2 Piece Wetsuit.

### Search & Rescue

One piece wetsuit with chest zipper, short sleeves and legs, shortie over jacket and a separate wet hood.

Manufactured from a high visibility red 5mm neoprene. Frequently used for helicopter search and rescue operations, as well as training.

Includes a protective Kevlar® coated seat area.

Features torch pockets that house lighting equipment used by search and rescue/ military divers.

## Neoprene.

### Hotwater Wetsuit

Also worn by commercial divers under our Hot Water Suit, this suit doubles as a 3mm super-stretch neoprene wetsuit, suitable for more temperate diving environments.

Our Hotwater Wetsuit has proved itself to be an incredibly versatile product. It is used not only by the diving community, but also in many other in-water situations where keeping warm is essential.

Many sport divers are now using their Hotwater Wetsuit as an additional layer of insulation beneath their drysuits. It has proved useful for those who want to perform deeper dives or dive in colder waters.



#### HOTWATER UNDERSUIT

CODE : HWS - WETSUIT - SIZE

S, M, L, XL, XXL

*Jonathan Warburton, Trade  
& Commercial Sales, at The  
Underwater Centre, Fort William*



## Zipped Neoprene Wetboots.



#### DELTA FLEX WETBOOTS



#### NEOPRENE BLACK WETBOOTS

Manufactured from a flexible 5mm neoprene, Northern Diver wetsuit boots have a unique titanium lining for fantastic heat retention and additional comfort.

These wetsuit boots feature a durable YKK side zip and a rugged anti-slip rubber sole. They also have additional protection around the heel and toe.

- Manufactured from 5mm neoprene
- Titanium lined
- Anti-slip rubber sole
- Heavy duty durable side zip
- Heel and toe protection

#### DELTA FLEX WETBOOTS

CODE : WETBOOT07-DT-SIZE

3 4 5 6 7 8 9 10 11 12 13

#### NEOPRENE BLACK WETBOOTS

CODE : WETBOOT -ALL - BLACK - SIZE

5 6 7 8 9 10 11 12 13



## Arctic Survivor.

### Evolution 5 Pro PFD

The standard Northern Diver personal flotation device, with crotch straps and cow's tail.

The main body is 8oz 100% nylon (ripstop), Oxford stitched with 3 acrylic coatings.

We can add removable logos to this PFD on request.

- Conforms to BS EN ISO 12402-5:2006.
- 3 buckles
- Quick-release fixloc buckle belt
- Removable crotch strap
- Cow's tail
- Carabiner
- Removable reflective strip on rear of the PFD
- 2 pockets
- Plastic equipment mounts

Available sizes:

**M – L** 80N

Chest size 86cm – 102cm

Weight 50kg – 70kg

**XL – XXL** 100N

Chest size 102cm – 120cm

Weight 70kg – 90kg

**XXXL** 110N

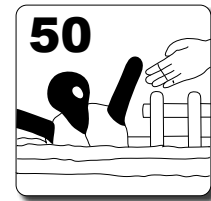
Chest size 120cm – 145cm

Weight 90kg +



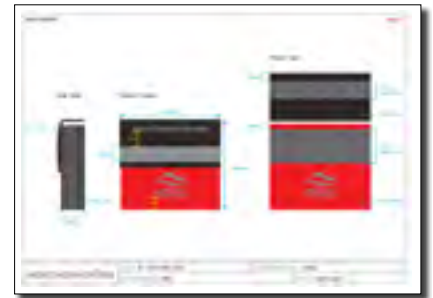
Reflective panel can be custom printed  
Also see Velcro fixed encapsulated panels

Example of  
Reflective panel  
can be custom  
printed. Also  
see Velcro fixed  
encapsulated  
panels.



50 Newtons  
CE approved

**MODIFIED TO ANY  
SPECIFICATION**



Avon Fire and Rescue, River Avon



## Rescue.

### 900P PFD



- Manufactured from ultra durable Cordura®
- Cow's tail tether optional
- Twist lock carabiner
- Whistle
- Low profile mesh and neoprene pockets
- Quick release buckle
- Fold away pouch for throw bag
- Conforms to BS EN ISO 12402-5:2006

Available sizes:

#### **M – L** 75N

Chest size 86cm – 102cm  
Weight 50kg – 70kg

#### **XL – XXL** 85N

Chest size 102cm – 120cm  
Weight 70kg – 90kg

#### **XXXL** 95N

Chest size 120cm – 145cm  
Weight 90kg +



Fold away pouch for use with throw bag



Mike Messenger  
Maryport Inshore Rescue, Maryport Marina

## PFD Accessories.



#### **COWTAIL + KARIBINER**

PFD - COWS - TAIL

**ONE SIZE**



#### **PFD CROTCH STRAP**

PFD - CROTCH STRAPS

**ONE SIZE ADJUSTABLE**



#### **VELCRO FIXED ENCAPSULATED PANELS**

CUSTOM ARTWORK AVAILABLE UPON REQUEST

**ONE SIZE - VELCRO REMOVABLE**



#### **PEELESS WHISTLE**

AVAILABLE IN ORANGE

**ONE SIZE**

## Arctic Survivor. 275N Life Jackets

Supplied with a 60g CO2 inflation cylinder, the Northern Diver Arctic Survivor 275N lifejacket is a high performance device for offshore use and severe environmental conditions, when maximum protection is required or where heavy waterproof clothing is being worn.

This lifejacket helps prevent drowning of those who cannot help themselves, for example if they are unconscious.

This item cannot be guaranteed to self right in all instances an unconscious user wearing heavy waterproofs or clothing. During tests it has been proved to self right in the vast majority of cases.

This lifejacket has been designed in consultation with rescue training organisations responsible for training the emergency services. It can be customised with logos.

LIFE - JACKET - 275 - COLOUR

One Size Available Only

## Features.

- 60g CO2 auto inflation cylinder supplied
- Whistle and oral inflation tube
- Heavy duty back and crotch webbing straps
- Personalise with your logo
- Conforms EN ISO 12402 - 2 & EN 399

Designed for  
rescue training  
organisations

Photograph below:  
model wearing the  
Arctic Survivor 275N  
lifejacket fully inflated -  
watch the video at  
[www.ndiver-rescue.com](http://www.ndiver-rescue.com)



Two colour options  
available: red and blue



### ANNUAL SERVICE KIT

LIFE - JACKET RE - ARM DEVICE

**INCLUDES CO2 CARTRIDGE**



### ANNUAL SERVICE KIT

LIFE - JACKET RE - ARM DEVICE

**WITHOUT CO2 CARTRIDGE**



### RE-ARMING KIT

LIFE - JACKET RE - ARM DEVICE

**ONE SIZE**



### CO2 60G CARTRIDGE

LIFE - JACKET - CO2

**ONE SIZE**







## Water Rescue Helmet. Scorpion II

Northern Diver's Scorpion II helmet is perfect for swift water rescue and many other outdoor activities that require additional head protection.

This helmet has been specially designed and manufactured to conform to the EN 1385:2012 (helmets for canoeing and white-water) standard of safety.

Our Scorpion II helmet will offer the user maximum protection in the event of an impact (impact defined by the international standards for helmet safety.)

For further protection and improved helmet stability, the foam inserts cover the user's ears



*The Scorpion helmet is ideal for extreme white water and swift water rescue, with great all round protection. It is designed to offer you maximum protection in case of an impact defined by international norms.*



### Features.

- Full cut design with drain holes
- ABS plastic shell
- Twist lock adjustment
- Side mounted clips that fit our Mini Quest torch (torch available to buy separate)
- Fits up to 26" head circumference
- Inner foam pads for size adjustment
- Colours available: yellow, red and white

#### SCORPION 2

HELMET-SCORPION2-COLOUR

**ONE SIZE - ADJUSTABLE**

Torch mounts on either side

## Extreme Rescue. Seahawk

Great all-round protection. Suitable for white water and swift water rescue.

The shell drops below the ear for extra protection and helmet stability.

The split-mould injection process creates a very rigid shell and an ergonomic "negative draft" shape that follows the natural curves of the head, protecting the forehead and base of the cranium.

- ABS plastic shell
- ABS plastic extends to ears
- Twist lock adjustment
- Lightweight
- Colours available: gloss red, white and orange; matte yellow and black
- Conforms to EN 1385:1998



#### SEAHAWK

HELMET - HAWK - COLOUR

**ONE SIZE - ADJUSTABLE**

## Side Cut Helmet.

### Predator

The side cut version of the CE approved Predator helmet, for those who prefer this style.

Created with thermoplastic for a robust shell.

#### Features.

- Durable thermoplastic shell
- EVA foam inner
- Custom fit pads
- Colours available: red, yellow, white and matte black

#### PREDATOR SIDE CUT

PREDATOR - SC - COLOUR

ONE SIZE - ADJUSTABLE



## Full Cut Helmet.

### Predator

CE approved Predator helmet with ear protection.

Thermoplastic just as the side cut predator, with an additional close fit at the back at the head.

#### Features.

- Durable thermoplastic shell
- PE foam inner
- Custom fit pads
- Colours available: yellow, red and white

#### PREDATOR FULL CUT

PREDATOR - HELMET - COLOUR

ONE SIZE - ADJUSTABLE





## Manta.

### MH/2 and MH/3

A high specification multi-role helmet, suitable for the most demanding of environments and used by rescue teams around the world.

The Manta has the facility to fit a variety of accessories, including visors, face shields and ear protection.

### Features.

- ABS plastic shell with polypropylene liner
- Removable ventilation covers
- 4-point chinstrap
- Accessory attachment points
- Colours available: white, hi-vis yellow, orange, red, royal blue, navy blue, olive green, black
- Conforms to EN 14052, as well as 10 other international standards



## Neoprene.

### Skull Cap

A 2mm neoprene skull cap.

Can be worn on its own or under a helmet.

Great for winter months.

Velcro closing chin strap



Velcro tab

#### SKULL CAP

HD - SKULL CAP SIZE

S/M L/XL

## Neoprene.

### Supervent Tech

#### SUPERVENT HOOD

HD - SS - SIZE

S M L XL

Style May Vary



The hood combines Supervent technology with our super-stretch Neoprene. The one-way Supervent valve removes trapped air from the inside of the hood, increasing comfort and ensuring a perfect fit throughout the dive.

The hood is manufactured from 6.5mm super-stretch neoprene, which features our Ti-Ax® heat reflective technology. On the outside, there's a stretch nylon heavy-duty coating.



CE Approved.

## Dry Glove System

- Quick release and re-fit system
- Revolutionary twin-safe locking ring mechanism
- Easy to use and no assistance needed
- Drysuit wrists stay sealed when gloves are removed
- 3 sets of inner rings included for variable drysuit thickness

Choose from durable PVC or chemical resistant Ansell gloves

### [ Durable PVC gloves ]

- Blue anatomically formed PVC
- Resistant to contaminating agents such as oil, hydrocarbons and acid
- Internal anti-bacterial treatment
- Textured fingers and palms for grip

### [ Ansell glove ]

- Cut, tear and puncture resistant
- Industry-leading grip and excellent dexterity
- Lightweight nitrile shell with seamless nylon liner
- Resistant to chemicals, oils and grease – gloves also have good grip in these conditions

### [ Thermal fleece inner glove ]

- Thermal 4-way stretch fleece
- Flatlock stitched seams for comfort
- Snug fit around wrist area for additional thermal protection
- Removable for warmer waters or for use post dive

### [ Package includes ]

- Either PVC or chemical resistant Ansell gloves
- Thermal fleece inner gloves
- 2 dry glove modules
- 3 sealing rings
- Locking tool
- Adhesive sealant
- Instructional video available online



Dry gloves can be easily & quickly fitted to any drysuit to give protection from biological, chemical & hydrocarbon contamination.

Gloves conform to the requirements of European directive 89/686/EEC and to the European standards EN420 (Dexterity) EN374 (liquid proof gloves, chemical resistant – data available on request) and EN388 (cut, tear and puncture resistance).

Integrates perfectly with neoprene and latex cuffs, and warm cuff systems.



Locking tool



Suit seal



Dry glove rings



Inner fleece gloves

Northern Diver's

Dry Glove System is suitable for both

arctic conditions & contaminated water environments.



#### DRYGLOVE RING SYSTEM

GLDRY - SYSTEM - V3 - SIZE

**S, M, L, XL**

2nd Gen. Black Ansell Gloves

#### DRYGLOVE RING SYSTEM

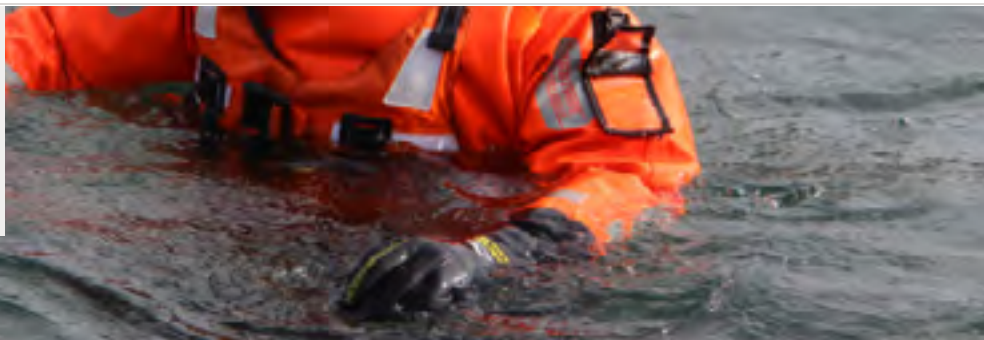
GLDRY - SYSTEM - V2 - SIZE

**S, M, L, XL**

Heavy Duty Blue PVC Gloves

Photo above: Humberside Police

## Accessories. Gloves



## SUPERSTRETCH SUPER COMFORTABLE & WARM

These gloves are manufactured from our unique 4-way super-stretch neoprene. They are reported to be the easiest of all our gloves to put on and take off.

These gloves are available in 2mm, 5mm and 7mm neoprene. For warmer water or surface use, we recommend the 2mm option. Our 5mm and 7mm options are ideal for cooler conditions, where thicker gloves are essential. Even at top thickness, these gloves don't compromise dexterity.

### 2MM SUPERSTRETCH

GL2-S/S - 07 - SIZE

**S, M, L, XL**

### 5MM SUPERSTRETCH

GL5-S/S - 07 - SIZE

**XS, S, M, L, XL**

### 7MM SUPERSTRETCH

GL7-S/S - 07 - SIZE

**M, L, XL**



## LOW COST AMARA PALM/NEOPRENE

Designed specifically for rescue services. Manufactured from 2mm neoprene, with Amara type faux suede on the palm and finger area for grip. Palm area is double reinforced.

The Velcro closure wrist system keeps flushing to a minimum.

### SPECIALIST RESCUE

GL - SRE - SIZE

**S, M, L, XL, XXL**



## KEVLAR® FACED SUPERSTRETCH

Extra strength and protection for when it counts.

The ultimate combination of luxurious super-stretch neoprene, Kevlar® palm and fingertips protection, and polymer coated fingertips.

### 3MM KEVLAR SUPERSTETCH

GL2-K-SIZE

**S, M, L, XL**



## NEOPRENE GLOVES

These neoprene gloves combine comfort, warmth and flexibility.

The palm, fingers and thumb feature a hard-wearing protective coating. Water migration is minimised with the addition of an elasticated Velcro wrist strap. Available in 3, 4 and 5mm.

### NEOPRENE GLOVES

GL5-08 - SIZE - THICKNESS

**S, M, L, XL**





## OPTIMUM GLOVES

Available in 3mm and 5mm options and featuring Ti-Ax® Thermacote® heat-reflecting lining.

These gloves are manufactured from a high-grade polymer, with additional protective Diamondflex and our Super-Tack embossed palms and fingers for heightened control and grip.

A tight-fitting wrist seal is essential to minimise water migration, but it can make the glove difficult to pull on over your hand. Our Optimum gloves feature a wrist zip to allow the necessary expansion when required.

### 5MM OPTIMUM GLOVES

GL5 - OPTIMUM - SIZE

**S, M, L, XL, XXL**

### 3MM OPTIMUM GLOVES

GL3 - OPTIMUM - SIZE

**S, M, L, XL, XXL**



### 5MM KEVLAR GLOVES

GL-5-K-SIZE

**XS, S, M, L, XL, XXL**

## 5MM KEVLAR® GLOVES

The ultimate hard-wearing dive glove with glass-reinforced fingers.

Kevlar® gives extra strength and protection to these 5mm gloves, without compromising on dexterity.

Designed for colder diving conditions, the gloves also feature Ti-Ax® Thermacote® lining.



### ARCTIC SURVIVOR GLOVES

GL01 - SIZE

**S, M, L, XL, XXL**

## SEMI DRY GLOVES

5mm neoprene gloves suitable for a wide range of diving conditions where you want to keep your hands warm and your gloves securely in place for the duration of the dive.

Neotex wrist seals on the Arctic Survivor gloves form a 'water lock' system. This seal system ensures no flush from the gloves, keeping your hands warm.

The neoprene ensures a comfortable, close fit for optimal dexterity - in or out of the water. The textured finish on the palms gives additional support.



North West Ambulance Service  
HART Team





## THERMAL DRY GLOVES

A simple alternative to our full Dry Glove System.

Polymer gloves with separate thermal fleece liners, featuring a latex seal.

The durable textured synthetic outer is chemical, cut and puncture resistant. An Isotherm fleece lining helps maintain warmth and comfort.

### THERMAL DRY GLOVES

GL - DRY - HELIOS - SIZE

**S, M**



## DRYTEK GLOVES

Drytek gloves have a thin double-wall nitrile shell, which is textured for grip. The use of this material makes the gloves hard-wearing, but lightweight and easy to manoeuvre your hands in.

Inside, a seamless 15-gauge soft nylon liner keeps your hands comfortable. These dry gloves also provide chemical resistance against oils and greases.

### DRYTEK GLOVES

GL - DRYTEK - SIZE

**S, M, L, XL**



Chris Marsden  
Kendal Mountain Rescue Team

## Accessories.

## Footwear & Fins



## CANYON BOOTS WITH VIBRAM® SOLE

Composite toe and mid-sole foil  
Tested to EN ISO 20345 standard  
Super-Grip Vibram® rubber sole – oil and chemical resistant  
Neoprene insoles for extra comfort  
Generous opening with velcro fastening  
External ankle protection  
Drain holes  
Two positive velcro straps

BOOT-CANYON - SIZE

**6 7 8 9 10 11 12 13**



## ROCK SWIM BOOTS

Lace up  
Velcro ankle closure  
Tested to EN ISO 20345 standard  
Fitted internal neoprene socks  
Oil & chemical resistant sole  
External ankle protection  
Over-cladding protection on heel, toe and sides

MOD-BOOT2-SIZE

**6 7 8 9 10 11 12 13**



## SAFETY ROCK SWIM BOOTS

Composite toe and mid-sole foil  
Tested to EN ISO 20345 standard  
Rugged hi-grip heavy-duty outer sole – oil and chemical resistant  
Suitable for use in and out of water  
Multi-point Velcro securing straps  
External ankle protection  
Over-cladding protection on heel, toe and sides

BOOT-COMPOSITE - SIZE

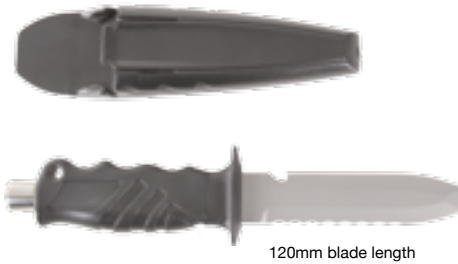
**5 6 7 8 9 10 11 12 13**

## Accessories.

### Knives Stainless & Titanium



Janis Perkins  
Advanced Openwater Diver



120mm blade length

#### ALPHA TITANIUM

- Titanium MOD knife
- Ideal general purpose diving knife - designed for the military
- Super sharp
- Lightweight
- Positive lock mechanism
- Black plastic hard-case sheath

MOD - ITEM - 53 - KNIFE



75mm blade length

#### LDK RESCUE TITANIUM

- Titanium 75mm twin-edged blade
- 3mm chisel point safety blade
- Protective hard plastic sheath
- 'Push button' quick release catch
- Handle with rear anchor point
- Quick locate knife handle insert
- Variable width attachment system
- Bracket to attach 50mm webbing

KNIFE - LDK040

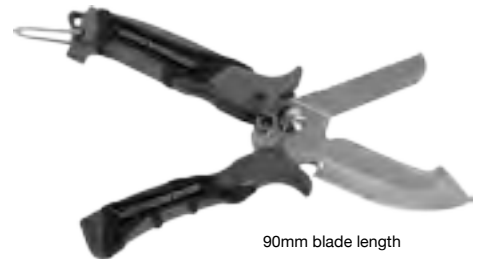


75mm blade length

#### SQUEEZE LOCK

- Compact and portable safety knife
- Attaches to your BCD or PFD
- Allows for quick emergency access
- Patented locking mechanism
- Overall length 6.5"
- Blunt tip blade
- 304 series stainless steel

KNIFE - SQUEEZE LOCK



90mm blade length

#### SCISSOR KNIFE

- High quality 420 stainless steel
- Reduced risk of rusting
- 3.5" sharp tip blade with serrations
- 2 in 1 knife with scissor function
- Chromium plating on blades
- Compact quick-release sheath
- BC mounting kits are included

KNIFE-KN77-BLACK/GREY



176mm blade length

#### GK ELITE

- Heavy duty commercial knife
- 7" X 2.5mm stainless steel blade
- Ultra sharp serrated edge
- High impact luminescent sheath
- Includes security shock cord
- Stainless steel split D-rings
- Twin aluminium Carabiner clips give multiple attachment options

KNIFE - GK - ELITE



110mm blade length

#### KN75 STAINLESS

- Serrated edge
- Net cutter
- Comfort grip handle
- Stainless steel solid butt
- O-ring holder
- Rubber knife straps

KNIFE - KN75 - COLOUR



110mm blade length

## KN68

- General purpose knife
- 110 mm stainless steel blade
- Sharp and serrated edges
- Blunt chisel tip
- Comfort-grip handle
- Solid stainless steel butt
- O-ring holder.
- Hard plastic sheath / rubber straps

KNIFE - KN68 - COLOUR



78mm blade length

## KN167

- 78mm twin edge blade
- 3mm chisel point safety blade
- Serrated/sharp edge and line cutter
- Hard plastic protective sheath
- 'Push button' quick release system
- Solid nylon comfort handle
- Webbing, BCD or PFD attachment
- Available in high-vis yellow or black

KNIFE - KN167 - COLOUR



70mm blade length

## KN48

- 70mm twin edge SS blade
- Serrated/sharp edge and line cutter
- 2.5mm chisel point safety blade
- Protective hard plastic sheath
- Thumb-lock quick release system
- Comfort handle / rear anchor point
- Webbing, BCD, PFD, hose or rope attachments

KNIFE - KN48 - COLOUR



110mm blade length

## KN65

- High quality 420 stainless steel
- 110mm sharp tip blade
- Serrated edge
- Line cutter
- 'Push button' quick release system
- Snap-lock hard plastic sheath
- Black soft-grip handle

KNIFE - KN65 - COLOUR



80mm blade length

## KN166P

- High quality 420 stainless steel
- 80mm serrated blade
- 2.5mm curve point safety blade
- Hard plastic protective sheath
- 'Push button' quick release system
- Solid nylon handle with rear strike
- Webbing, BCD or PFD attachments

KNIFE-KN166P-YELLOW



80mm blade length

## KN166P WITH WEBBING SHEATH

- Single sided blade
- 2.5mm curve point safety blade
- High quality 420 stainless steel
- 80mm serrated blade
- Solid nylon handle with rear strike
- Soft webbing protective sheath

KNIFE - KN166 - CANVAS

## BREAK GLASS EMERGENCY ESCAPE HAMMER

Double sided head that shatters windows quickly and easily, allowing safe, quick escape from any window.

Also includes razor sharp blade in the handle that cuts easily through seat belts.

The glass break hammer has a hardened steel pointed end designed to break the glass to aid escape.



N/A



## Accessories.

### Masks, Snorkels & Fins

All our masks are made from medical grade silicone or thermo plastic rubbers

The world's best-selling diving full face mask. The DIVATOR valve is one of the most reliable valves available.

The mask performs in even the harshest of conditions, such as mud, oil and fast-flowing cold currents. Designed for cold-water dives.



- Black silicone skirt
- Low volume
- Easy clearing
- Wide field of vision
- Optical lenses available



#### FULL FACE DIVATOR MASK

*Supplied without lighting system*

DIVATOR - MASK

#### BIO METAL PRO MASK

(BLACK) MASK-BIO METAL PRO (SILVER) MASK-BIO METAL PROCHR/BK Sil  
(GOLD) MASK- Bio Metal Pro Spec Lens



#### PHANTOM CLEAR VISION

- Rounded lens gives a superb field of vision
- Coated lenses
- Anti-fog technology
- Soft silicone facial skirt and strap
- Double feather-edge seal for comfortable fit
- Patented push-button adjustment buckles

MASK-MS249BTC-S



#### 4 WINDOW MASK (413)

- Unique twin split lens design
- Panoramic field of vision
- Surgical grade silicone
- Fits a wide range of face shapes

MASK - MS413 - COLOUR



#### MILITARY MASK (235)

- Twin extended lens
- Low volume design
- Excellent field of vision
- Surgical grade silicone
- Fits a wide range of face shapes

MASK - MS235 - BLACK



#### MASK & SNORKEL COMBI

- Ideal for ladies/youths
- Available in blue or black
- Black mask set designed for those with smaller face shapes
- Reported by our customers as great value
- Supplied in a blister pack

MASK-SNORKEL-COMBO-COLOUR



#### M23

- Tri lens single frameless window design
- Large surface area for light to enter
- Surgical grade silicone
- Superbly comfortable fit

M23 + COLOUR



#### DEEP VISION MASK

- Twin extended lens
- Low volume design
- Extended field of vision
- Surgical grade silicone
- Fits a wide range of face shapes

DEEP - VISION - COLOUR



#### DRY TOP PURGE SNORKEL

- Hinged valve
- Quick-release clip
- Crystal silicone flex section
- One way purge valve

SNORKEL-1239-'COLOUR'



#### SNAKEHEAD SNORKEL

- Splash guard
- Replaceable mouthpiece
- Drop away non return valve
- Flexi-tube

SN - 1030 - COLOUR



#### GALE FORCE SNORKEL

- Coiled hose
- Adjustable mask clip
- Silicone mouthpiece
- Splash guard

SNORKEL - GALE - FORCE - COLOUR



#### DUAL FLEX SNORKEL

- Twin coiled silicone hose
- Self draining regulator
- Silicone mouthpiece
- Adjustable mask clip

SNORKEL - SN55 - COLOUR



## CODA DUAL FIN

High power is delivered through these fins, with less effort required from the diver.

The patented design allows water flow to interact with each fin blade, producing independent thrust from each fin. The fins also produce thrust on each up AND down stroke, improving finning efficiency.

The polymer was developed to ensure a stronger fin action in currents. The elastomer has a soft feel, with good spring, and retains its unique shape even in arctic waters.

- Patented dual split-fin design
- Unique 'nature's wing' shape
- Superb power and performance
- Heavy duty build quality
- Very efficient finning on up / down strokes
- Lightweight
- Boot size: M fits 4-6 UK , L fits 7-10 UK, XL fits 11+ UK

FIN - CODA - SIZE

Capernwray, Carnforth, UK



## POWER FINS

Twin blades joined with a soft middle section, allowing independent movement of each blade.

- Powerful thrust with easy manoeuvring
- Comfortable foot pocket
- Adjustable fin straps
- Available in a range of colours
- Boot size: S, M, L, XL, XXL

FIN - 2081 - SIZE



## BIO RANGER FIN - APOLLO

Apollo's Ranger XT are tough, light and compact military split fins that are suitable for long and short distance water operations, including counter terrorism, tactical operations, mine counter measures, search and rescue, and battle damage repair. Their size and low weight means that they are also suitable for helicopter and parachute insertions.

The rubber's flexibility gives powerful thrust, while reducing the risk of surface splashing. The comfortable foot pocket accommodates most military and amphibious footwear, for example jungle boots. Owing to the anti-slip high traction sole, these fins are also easy to walk in.

- Manufactured from 100% natural rubber (negatively buoyant)
- Dynamic split blade technology – reduces fatigue
- Stainless steel spring straps
- Comfortable foot pocket with anti-slip high traction sole
- Low magnetic permeability for EOD
- Boot size: M/L, L/XL

FIN - BIO FIN RANGER 'SIZE'



## BIO FIN - APOLLO

100% rubber provides a soft, comfortable foot pocket and the perfect amount of weight and flexibility for top speed - with the least amount of effort and strain on your body.

- 20 degree angle of blade ensures that the fin works with the natural resting angles of ankle and knee
- Split fin design allows for more power and less effort than any other fin
- Increased maximum speed and reduced fatigue
- Consistently rated as the fastest fin in the water
- Easy quick release buckle system with finger loop
- Boot size: S, M, L

MOD-FIN-BIO-'SIZE'



## JET FINS (METAL AND PLASTIC BUCKLE OPTIONS)

Our Jet Fins are manufactured from a very high quality rubber, using the latest manufacturing processes.

They are very weighty and robust - specifically designed for maximum endurance, exceptional propulsion and the ultimate finning power.

- Available with two buckle styles
- Tested in extreme commercial diving conditions
- Preferred choice of divers around the world
- Manufactured from high quality rubber
- Robust and superb endurance
- Exceptional finning power
- L, XL, XXL, XXXL

PLASTIC : FIN - JETFIN - QR - 'SIZE'

METAL : FIN - JETFIN - 'SIZE'



## SPRING FIN STRAPS (METAL AND PLASTIC)

Robust spring fin straps, designed to make it easier to put on and remove your fins. Manufactured from marine-grade stainless steel for low maintenance. Easily fitted to most brands of diving fins.

- Stainless steel spring
- Flexible rubber outer
- Sizes: S=6-8, M=9-11, L=12-14
- Very comfortable
- Available with a metal or quick release plastic buckle

FIN - SPRING - SIZE



## FINS STRAP / BUCKLE

- Manufactured from high quality materials
- Strap only or strap and buckle 'set' options
- Essential equipment for your dive spares kit

FINSTRAP - 2





## OMEGA AMPHIBIAN FLIP FINS

These unique fins give an effortless transition from walking to swimming. For walking use, the foot pocket sole is curved and has a substantial tread to avoid the risk of slipping. When in the water, the user simply kicks out, as though they are finning, and the fin blade secures in place.

The fins give the user excellent propulsion with minimal effort, owing to their strong and flexible polypropylene G3 frame and TPE web, plus flanges that regulate blade movement.

The blades are returned to the walking position via a lever. Ladder climbs and movements on a boat are made simple with these fins, which are also suitable for water jumps and helicopter insertions.

MOD - FIN - FLIP FINS

## Super Powerful Aluminium Torches. Varilux Family

After the huge success of our Varilux 1200 diving torch, Northern Diver brings you the Varilux Travel and Varilux Micro.

Each of the 3 torches is made from aircraft grade aluminium, has a magnetic external 'slide' switch and is depth tested to 100 metres.

Each Varilux is supplied with:

- Wrist lanyard
- Instructions
- Carry case



### Varilux 1200

Single ultra white LED  
Wireless charging system  
Fully charged in under 12h  
Continuous burn time: 2h max setting, 60h lowest setting  
Variable 50 - 1200 lumens  
Length: 210mm  
Head diameter: 59.5mm  
Body diameter: 39.5mm  
Dry weight: 548g

TORCH - VL12 - UWL

### Varilux Travel

CREE XM-L T6 white LED  
Fully charged in 6h  
Continuous burn time: 2.7h max setting, 60h lowest setting  
Variable up to 800 lumens  
Length: 140mm  
Head diameter: 49.5mm  
Body diameter: 34.0mm  
Dry weight (inc batteries): 290g

TORCH - VL8 - UWL

### Varilux Micro

CREE XPG-R5 LED  
LED life: 50,000+h  
Beam angle: 4.6 degrees  
Continuous burn time: 1h max setting, 24h lowest setting  
Variable up to 300 lumens  
Length: 122mm  
Head diameter: 44.5mm  
Body diameter: 29.5mm  
Dry weight (inc batteries): 169g

TORCH - VL3 - UWL

## Underwater. Fusion X4

The latest model of our Luxeon underwater torch, with cutting-edge technology and the usual excellent Luxeon build quality.

The X4 has a redesigned LED, light reflector and switch assembly, for the ultimate package of superb performance and durability. It also features Super-Luxeon pure white light technology, for fantastic focused beam and a colour temperature of 5300K.



## Features.

- Super high 310 lumens output
- Natural daylight colour temp 5300K
- 8.5hr total continuous burn time
- New optically enhanced reflector
- Philips Lumileds T 3w Luxeon LED
- Depth tested to 95 metres
- Tough polycarbonate body with aluminium head
- Double O-ring seals
- External magnetic on/off switch
- 4 x AA alkaline batteries (supplied)

TORCH-FUSION-X4

## Pure Power. Mini Quest

Northern Diver's powerful Mini Quest long burn underwater LED torch is now even brighter - 230 lumens output.

The Mini Quest underwater torch has an 8.5 hour total (continuous) burn time, using specially developed variable output technology.

(100% full power output for 3.5hrs, which then gradually decreases over the remaining 5hrs burn time).

## LED 36Hrs Burn Time. Strobe Torch

Our LED Strobe Torch has a single 1W LED with 120 lumens output (30% higher than our previous model).

The upgraded strobe unit is now silent-operating and has been further developed to surpass the performance of our previous model in colder water temperatures.

During operation, the strobe unit is visible up to 2 miles away (depending on conditions) and has a continuous burn time of up to 6 hours.

Manufactured from impact resistant ABS material, the one piece body features our newly developed (three position) external magnetic function. The unit is now depth tested to 50 metres.

## LED. Flexi Light

High intensity LED that projects light through a flexible silicone stick.

The Flexi-Light has a simple press-to-operate button under the coloured marker, which activates flashing, constant and off modes.

Mode 1: Flash, 36h burn time  
Mode 2: Constant, 20h burn time



## Can be supplied with red and white diffusers and helmet mount

- Powerful 'spot' beam
- 8.5hr total continuous burn time
- NEW Philips Lumileds 3w Luxeon LED
- Depth tested to 95 metres
- Tough polycarbonate body with an aluminium torch head
- Double O-ring seals
- Rear mounted magnetic on/off switch
- Optional helmet mount
- 4 x AA alkaline batteries (supplied)

TORCH - MINI - LUX - ND



The re-designed battery carriage requires 3 x AA batteries (not supplied). Finally, the twin anchor points have been designed to fit up to 32mm webbing, and the unit is now supplied with a handy attached nylon wrist lanyard.

## Features.

- Single 1W LED - 120 lumens output
- Upgraded 'silent' strobe unit
- Strobe visible up to 2 miles away
- Newly developed magnetic function switch
- One piece impact resistant body
- Twin attachment points
- Supplied with wrist lanyard

STROBE - LED - TORCH

## THE SUPER ALTERNATIVE TO CHEMICAL LIGHTSTICKS



- Simple push button operation
- Output: 8 lumens
- Visible distance: up to 3km
- Depth tested: 60 metres
- Double sealed
- Single use
- Non replaceable battery
- Material:  
RoHS compliant polyurethane

GLOWSTICK - LED - COLOUR

## Extendable. Reach Pole

Lightweight extendable-reach rescue pole for the extension of personal rescue/retrieval range.

The design joins a rugged 3-section extension handle with a simple, efficient independent clamp lock between each section.

*Right : Photographed wearing a Two Piece Flood Suit, Metalux® undersuit & Freestyle Safety Boots. Model holds Reach Pole with 15M Throw Bag attached around the waist.*



## Features.

- Compact, easily transportable design for operation in the field
- Quick deployment of the pole from storage to full extension
- Over 4.5m reach
- Highly visible for use in low light conditions
- Design ideal to hook, lift and drag
- Weight: 1.5kg
- Length (stowed): 189.5cm
- Length (extended): 467cm
- Hook width: 8.2cm, length: 12cm

REACH POLE

1kg weight retained inside base by stainless C-Clip



5kg weight retained by C-Clip on base



## Location Marker Float With Lead Weight. Location Marker Buoy

Can be quickly and easily deployed from the surface or underwater as a marker for lost items or to mark a location.

The float sits high in the water and the strobe is easily seen in all weather or at night.

Reusable, with 40/80m line length.

High vis strobe : Burn time 7 days+  
High vis ABS yellow foam body  
Available with 1kg and 5kg weights

**1KG**

PELI FLOAT - 600G

**5KG**

PELI FLOAT - 5KG

East Midlands Ambulance  
Service, HART Team



## Travel Dive Bags.

### Voyager Range

**10 year warranty against material and workmanship defects.**

Did you know that the majority of bag damage occurs on baggage carousels at airports? If your bag is damaged in this way, contact the baggage handler and make a claim. Failing that, contact your holiday insurers.



Includes -  
Tablet Case, Security Gels and Cosmetics Bag and Luggage Tag

### VOYAGER CABIN - IDEAL FOR RYANAIR AND OTHER LOW COST AIRLINES

- Ripstop nylon fabric
- Top-mounted 'comfort' carry handle
- Metallic red two stage telescopic handle
- 4 smooth wheels
- Shoulder strap - attaches to either side of the bag
- Generous main compartment with tablet pocket
- Northern diver tablet case included
- Velcro closing documents side pockets
- Discreet back zipped pocket - perfect for passport and wallet
- Boarding pass pouch on the rear
- Plastic clip inside to attach the security gels and cosmetics bag
- Length: 20cm Width: 38cm Height: 54cm

VOYAGER CABIN VOLUME : 40 L WEIGHT : 3KG



### VOYAGER QUEST

- Ultra-durable Cordura® fabric
- Top-mounted 'comfort' carry handle
- 2 heavy duty wheels
- Extra-reinforced pull handle
- Lockable telescopic handle
- Zipped top fin compartment
- Zipped side and end pocket
- Rigid heavy duty PVC curved base
- Wheel and corner guards
- Coiled top corner guards
- Clamshell opening
- Length: 72cm, Width: 36cm, Height: 44cm

Includes - Luggage Tag and Wash Bag

VOYAGER QUEST VOLUME : 114 L WEIGHT : 5.4KG



### VOYAGER MAXI QUEST

- Ripstop nylon fabric
- Top-mounted 'comfort' carry handle
- 2 heavy duty wheels
- Extra-reinforced pull handle
- Lockable telescopic handle
- Zipped top fin compartment
- Zipped side and end pocket
- Rigid heavy duty PVC curved base
- Wheel and corner guards
- Coiled top corner guards
- Clamshell opening
- 2 inside compartments
- Length: 81cm, Width: 39cm, Height: 44cm

Includes - Luggage Tag and Wash Bag

VOYAGER MAXI QUEST VOLUME : 139 L WEIGHT : 6.1KG

### VOYAGER LIGHTWEIGHT



- Ripstop nylon fabric
- Top-mounted carry handle
- Handles at both ends
- Removable tow strap
- Protective PVC base
- Plastic runners on base
- Wheel and corner guards
- 2 zipped compartments
- Luggage tag window
- Length: 81cm, Width: 40cm, Height: 42cm

Includes - Wash Bag

VOYAGER LIGHTWEIGHT VOLUME : 136 L WEIGHT : 3.5KG



### VOYAGER ALL TERRAIN LIGHTWEIGHT

- Washable PVC fabric
- Top-mounted carry handle
- Handles at both ends
- Removable tow strap
- Protective PVC base
- Plastic runners on base
- Wheel and corner guards
- 2 zipped compartments
- Luggage tag window

Includes - Wash Bag

L: 81cm, W: 40cm, Height: 42cm  
VOYAGER ALL TERRAIN VOLUME : 136 L WEIGHT : 4.1KG

## NDB5.

### Military Holdalls

All NDB5 holdalls are manufactured from high-grade PVC. These bags are supplied to the UK MoD but are loved by all.

These holdalls are supplied with an internal bag, suitable for your dry clothes, towels etc. The inner bag is zipped and lightweight.

These bags can be supplied with a roll-up changing mat on request.

### NDB5 160L MILITARY HOLDALL

- Washable inside and out
- Available in blue, black and red
- Inner nylon zipped bag included
- Capacity: 160L
- Weight: 3.5kg
- Length: 97cm
- Width: 45cm
- Height: 37cm

### NDB5-S 110L MILITARY HOLDALL

- Shorter version of NDB5
- Washable inside and out
- Available in blue, black and red
- Inner nylon zipped bag included
- Capacity: 110L
- Weight: 3kg
- Length: 70cm
- Width: 45cm
- Height: 37cm

## Scuba Holdall.

### NDB10

- Designed for military use
- Hard-wearing Cordura®
- Separate end pocket
- Additional fin pocket
- Heavy duty top carry handle
- Padded shoulder strap
- Corrosion resistant zips
- Capacity: 80L
- Weight: 1.5kg
- Length: 73cm
- Width: 30cm
- Height: 34cm

All holdalls come with inner dry clothes bag

Styles of NDB5 bags may vary



NDB5 VOLUME : 160 L



NDB5S VOLUME : 110 L



Above :  
Optional changing mat  
L100cm, W75cm

Inner dry clothes bag  
shown is not to scale



Above : inner dry clothes bag  
L55cm, W38cm, H20cm



NDB10 VOLUME : 80 L

## Fully Dry Bags.

### Air, Light & Watertight Range

#### YKK AQUASEAL ZIPPED DRY BAG

A large watertight and airtight bag weighing only 880g.

The Zipped Dry Bag is manufactured from 500 denier PVC and has welded seams for extra reinforcement. The YKK high compression Aquaseal dry zip is protected with PU tape.

The bag has adjustable, padded shoulder straps and is load tested to 100kg, including the lift strap between the shoulder straps. Can be fitted with inflation and exhaust valves.

Weight: 0.85kg  
Width: 39cm      Height: 62cm      Length: 24cm

DRYBAG - ZIPPED

**VOLUME : 60 L**



#### VOYAGER ROLL TOP DRY BAG

Manufactured from a very heavy duty PVC backed Cordura® material, for excellent abrasion resistance. Bag also has a fully washable interior.

Features a roll-down top to keep the water out. The bag also keeps the water in if you are transporting wet items.

Includes a four-point compression strap system to reduce the height (if the bag is not filled to capacity).

Easy carrying, using the attached padded and adjustable rucksack straps or the top mounted webbing handle. Can be fitted with inflation and exhaust valves.

Weight: 0.7kg  
Dimensions (expanded)  
Width: 40cm      Height: 75cm      Length: 26cm

NDB6 - RUCKSACK - DRY

**VOLUME : 78 L**

#### ROLL TOP DRY BAGS

Made from heavy-duty PVC, with a roll-top quick release Fastex clip system to securely close and seal the dry bag and provide a convenient carry handle.

To seal the bag, simply roll the top over and clip.

Keeps the water out and will also keep the water in (if you are transporting wet items).

Available in three convenient sizes, to suit most watersports and many different outdoor pursuits.

The small size is perfect for stowing inside a canoe/kayak.

The medium and large sizes include a detachable shoulder strap, to assist with transporting a heavier load.

Available in small, medium and large sizes. 3 colour options.  
Large: 0.7kg, Height: 75cm      Width: 38cm      Depth: 38cm  
Medium: 0.4kg, Height: 54cm      Width: 30cm      Depth: 30cm  
Small: 0.2kg, Height: 35cm      Width: 20cm      Depth: 20cm

LARGE : DRYBAG - L - COLOUR  
MEDIUM : DRYBAG - M - COLOUR  
SMALL : DRYBAG - S - COLOUR



**Large - 117 Litres**

**Medium - 51 Litres**

**Small - 12 Litres**



## Medical.

### Specialist Bags

#### RESPONDER SPORT

The Responder Sport is a tough and practical backpack, offering flexibility to organise kit and providing easy access in an emergency.

- Green top span PVC, water resistant and wipe clean
- Transparent pocket on front for interchangeable panels
- Dual front pocket
- Clamshell opening for fast, easy access
- Lined with quilted diamond velvet nylon
- 2 Velcro padded cylinder protectors
- 4 zipped removable internal compartments
- Heavy duty splash proof zips with 'easy grab' zip pullers
- Comfortable carry handles on both the top and side
- Adjustable shoulder straps
- Moulded back support padding for added comfort
- Reflective safety strips and piping
- Weight: 1.5kg      Volume: 46L
- Height: 58cm      Width: 40cm      Depth: 20cm



SOS-RESPONDER SPORT

#### PROFESSIONAL RESPONDER

Organises kit and gives easy access in an emergency.

- Green top span PVC, water resistant and wipe clean
- Transparent pocket on front for interchangeable panels
- Clamshell opening for fast, easy access
- Lined with quilted diamond velvet nylon
- Velcro close padded cylinder protector fitted
- 3 zipped removable internal compartments
- Heavy duty splash proof zips with "easy grab" zip pullers
- Comfortable carry handles on both the top and side
- Adjustable shoulder straps
- Moulded back support padding for added comfort
- Reflective safety strips and piping
- Weight: 1kg      Volume: 23L
- Height: 60cm      Width: 32cm      Depth: 12cm



SOS-PROF-RESPONDER

#### OXYGEN RESUSCITATION BARREL BAGS

Designed for oxygen and analgesic equipment.

- Transparent pocket on both sides of the bag
- Removable panels for changeable logos
- Padded cylinder protector fitted inside the bag
- Internal pockets on each side
- Heavy duty splash proof zips
- Comfortable dual rubber carry handle on the top
- Removable shoulder strap
- Reflective piping
- Made from ripstop nylon fabric
- Bag base: top span PVC for extra protection
- Base is wipe clean
- Weight: 0.7kg      Volume: 30L
- Height: 60cm      Width: 25cm      Depth: 20cm



BLUE OXYGEN BAG : SOS-OXY-BARREL BAG

GREEN ANALGESIC BAG : SOS-ANALGESIC BARREL BAG

## Rescue.

# Throw Bags With Light Reflective Floating Cord



Reflective Floating Safety Line



25M : THROW - BAG - RL - L

20M : THROW - BAG - RL - M

## THROW BAGS

Throw bags are manufactured from ripstop Cordura® nylon material. They also feature a draining mesh base for a quick drying time. There is the additional safety feature of a reflective strip, which has super high-vis reflective properties, assisting emergency services during night use.

Includes 15m, 20m or 25m of tech-grade 10mm high-vis floating safety line, with a breaking strain in excess of 600kg. Reflective floating safety line is also available with the 20m and 25m throw bags. All the sizes of our throw bags are supplied complete with the nylon webbing guide belt, for use with the attached guide belt webbing loops.

25M : THROW - BAG - L

20M : THROW - BAG - M

15M : THROW - BAG - S



## THROW BAG GUIDE BELT

THROW - BAG - BELT

ONE SIZE - ADJUSTABLE

## FLOATING LINE RESCUE BACK PACK

- 10mm technical rescue polypropylene floating line
- Pre-marked every 10m for accurate measurement
- Ultra-durable nylon-lined 1000 denier Cordura® bag
- Integrated rucksack straps
- External light reflective hoops
- Available in 60m and 100m variations

100M : FLOATING LINE 100M

60M : FLOATING LINE 60M

## Cases

Make your own foam-lined protection case  
11 x 22.5 x 17.5 cm



## HEAVY DUTY DRY BOX WITH PICK & PLUCK FOAM

DRY BOX ONE SIZE

## Trolley

Aluminium, telescopic and folding. Will carry a weight of up to 200kg

Height: 96cm  
Width: 50cm  
Depth: 46cm



## LIGHTWEIGHT TROLLEY

MOD-TROLLEY





## Designed For You.

### Custom Bags

We design and manufacture bags for many of our customers.

Just like our bespoke rescue drysuits, our goal is to design and manufacture products that fit a customer's needs perfectly.

From our experience, attention to detail is a key factor when designing bags.

We welcome enquires regarding any size or style of bag. Our team can manufacture most bags from a good quality pdf, which we are happy to assist with. Alternatively, you can provide us with a sample, detailing the modifications you would like included in your design.

To the right you can see just some of the bags that we have designed.

Please contact us with your requirements.

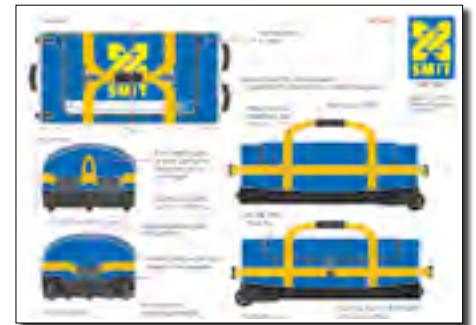
Tel : +44 (0) 1257 25 69 34

Mob : +44 (0) 7854 25 20 13

Email: [craig@ndiver.com](mailto:craig@ndiver.com)  
[jackie@ndiver.com](mailto:jackie@ndiver.com)

For a nominal MOQ we can assist with your bag design.

### Designed For SMIT, Netherlands



A PVC bag designed to hold a large amount of weight.

### Designed For London Fire Brigade



Manufactured from Cordura®, with plenty of easy-access pockets.

### Designed For The Scottish Ambulance Service

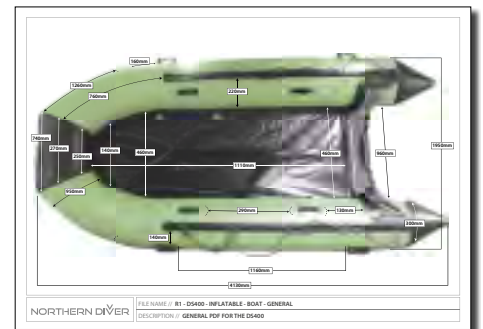


A neoprene ambulance bag.  
Reflective silver chequered printing. Crest printed on the front of the bag and removable straps at the back. Specially designed pocket to hide straps if required. 3 separate compartments in total with carry handle on top and studs for grip at the bottom of the bag. Inside are separate compartments with Velcro fastening - these can also be tailored to your specification.



## Inflatables. Aluminium Floor Inflatable Boats

Inflatable boats supplied complete with two oars, oarlocks, two foot pumps, a repair kit and carry bag. Heavy duty, lightweight and easy to carry.



PDFs created to customer specs



Aluminium fold away floor



All boats have an inflatable keel



### 3M BOAT

**Model:** DS300  
**Length:** 300cm  
**Beam:** 158cm  
**No. of chamber:** 3+1  
**Tube diameter:** 40cm  
**Max persons:** 4+1  
**Weight:** 55kg  
**Material:** 0.9mm PVC  
**Floor:** Aluminium  
Fold away  
4 panels  
**Engine\*:** 15HP

BOAT-INFLATABLE 3M

### 4M BOAT

**Model:** DS400  
**Length:** 400cm  
**Beam:** 200cm  
**No. of chamber:** 3+1  
**Tube diameter:** 50cm  
**Max persons:** 8+1  
**Weight:** 103kg  
**Material:** 1.2mm PVC  
**Floor:** Aluminium  
Fold away  
4 panels  
**Engine\*:** 25HP

BOAT-INFLATABLE 4M

### 5M BOAT

**Model:** DS500  
**Length:** 500cm  
**Beam:** 200cm  
**No. of chamber:** 4+1  
**Tube diameter:** 52cm  
**Max persons:** 12+1  
**Weight:** 135kg  
**Material:** 1.2 mm PVC  
**Floor:** Aluminium  
Fold away  
5 panels  
**Engine\*:** 50HP

BOAT-INFLATABLE 5M

5 colour options available.  
Logos applied upon request.

Need another size?  
Need another material?

Contact us if this is not quite  
your specification. We can  
always help.

## Inflatables. Sleds

Water rescue craft for use in rivers; flooded urban and coastal areas; mountains and lakes. The Sled is lightweight and portable, both inflated and deflated. It is easy to manoeuvre and can be paddled, pulled by hand or towed by a jet ski, boat or small hovercraft.

Supplied with double-blade paddle, hand pump, repair kit and carry bag.

Custom materials, colours and signage are available.

Please contact us for more information.

## 15KG RR2 RESCUE SLED

**Model:** Rescue Raft 2 (RR2)

**Length:** 260cm

**Width:** 100cm

**Max persons:** 4

**Weight:** Approx 15kg

**Material:** 1.2mm PVC

**Floor:** 15cm thick drop-stitch material

**Reinforcement:** 1.2mm PVC under the floor

**Chambers:** 1

**Other features:**

- Pressure relief valves
- Flip tabs for quick righting
- 15 stainless steel D-rings
- 6 lifting handles

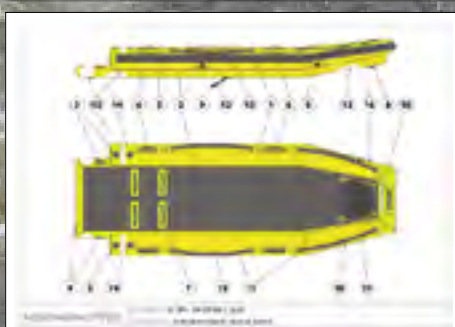
RESCUE SLED - RR2



## Inflatable Patches



Can be applied in rain and under water. Yes, they really work on all types of inflatable products - boats, life rafts, life jackets etc. Works on PVC, neoprene and nylon fabrics.



East Midlands Ambulance Service, HART Team





## 18KG RR3 RESCUE SLED

**Model:** Rescue Raft 3 (RR3)

**Length:** 300cm

**Width (internal):** 75cm

**Width (overall):** 120cm

**Max persons:** 5

**Weight:** Approx 18kg

**Material:** 1.2mm PVC

**Floor:** 12cm thick drop-stitch material

**Reinforcement:** 1.2mm PVC under the floor

**Chambers:** 3

**Other features:**

- Pressure relief valves
- 7 stainless steel D-rings
- 6 lifting handles

RESCUE SLED

COLOUR OPTIONS



## 20KG RR4 RESCUE SLED

**Model:** Rescue Raft 4 (RR4)

**Length:** 360cm

**Width (internal):** 70cm

**Width (overall):** 115cm

**Max persons:** 6

**Weight:** Approx 20kg

**Material:** 1.2mm PVC

**Floor:** 15cm thick drop-stitch material

**Reinforcement:** 1.2mm PVC under the floor

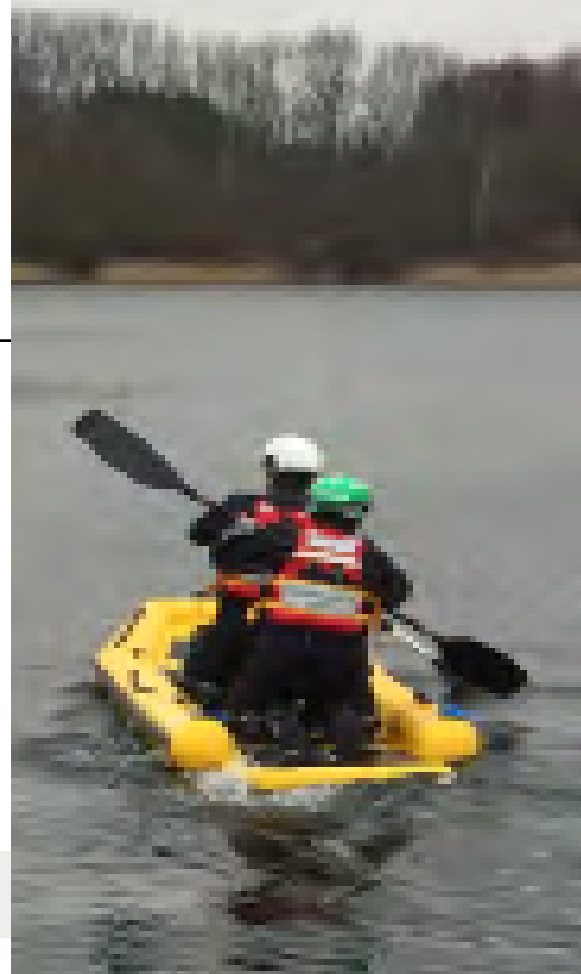
**Chambers:** 3

**Other features:**

- Pressure relief valves
- Flip tabs for re-righting
- 9 stainless steel D-rings
- 6 lifting handles

RESCUE SLED - RR4

EXCELLENT PERFORMANCE.  
SUPERB HANDLING.  
INCREDIBLY VERSATILE.  
A STABLE PLATFORM IN  
ALL CONDITIONS.



5 colour options available.  
Logos applied upon request.

Need another size?  
Need another material?

Contact us if this is not quite  
your specification. We can  
always help.

*East of England  
Ambulance Service,  
HART Team training*



## Inflatables. Inflation Devices



### SATURN REG INFLATION KIT

Designed for use with either DIN 300bar or A-Clamp 232bar diving cylinders. Various sized cylinders available from 3L to 15L

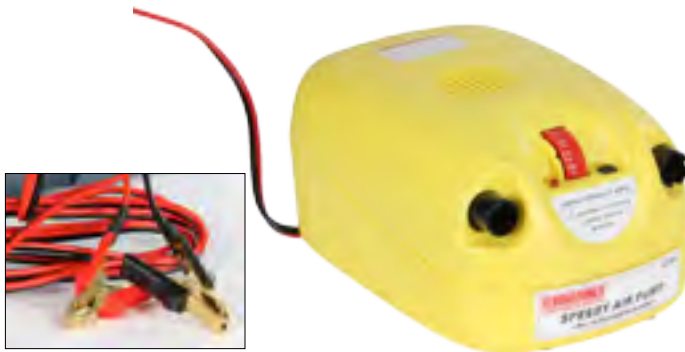
REG - ND - M4 - DIN (or) ACLAMP



### DUAL ACTION PUMP

N/A

Dual action inflator. Supplied with 2m inflation hose for quick inflate or deflate



### 12V SPEEDY AIR PUMP GP80 WITH CROC CLIPS

N/A



### MAINS POWER SPEEDY AIR PUMP MAX SERIES

N/A

## SUZUKI ENGINES

Combining a high performance DOHC (dual overhead cam) engine with a Lean Burn Control System to create an outboard that delivers superior power and performance, along with top-level fuel economy.

### 20 HP ENGINE

**Recommended transom height:** 508mm (20in)

**Weight:** 49.0Kg

**Bore x stroke:** 60.4 x 57mm

**Starting system:** Electric and manual

**Engine type:** OHC 4-valve

**Fuel delivery system:** Battery-less electronic fuel injection

**No. of cylinders:** In-line 2

**Piston displacement cm3:** 327cc

**Maximum output:** 14.7kW

**Full throttle operating range:** 5,300 - 6,300

**Steering:** Tiller

**Oil pan capacity:** 1.0Lit.

**Ignition system:** Digital CDI

**Alternator:** 12V 12A

**Engine mounting:** Shear mount

**Trim method:** Manual trim & tilt

**Gear ratio:** 2.08:1

**Gear shift:** F-N-R

**Exhaust:** Through prop hub exhaust

### 50 HP ENGINE

**Recommended transom height:** 508mm (20in)

**Weight:** 104Kg

**Bore x stroke:** 72.5 x 76.0mm

**Propeller selection (pitch):** 9\

**Starting system:** Electric

**Engine type:** DOHC 12-valve

**Fuel delivery system:** Multi-point sequential electronic fuel injection

**No. of cylinders:** 3

**Piston displacement cm3:** 941cc

**Maximum output:** 36.8kW

**Full throttle operating range:** 5,300 - 6,300

**Steering:** Remote

**Oil pan capacity:** 2.7Lit.

**Ignition system:** Fully-transistorised

**Alternator:** 12V 19A

**Engine mounting:** Shear mount

**Trim method:** Power trim and tilt

**Gear ratio:** 2.27:1 **Gear shift:** F-N-R

**Exhaust:** Through prop hub exhaust



 **SUZUKI**

We are agents for Suzuki outboard engines, two & four stroke. We can also supply any other brand.

## Inflatable.

### 10m Rescue Tube

The Inflatable Rescue Tube is a first response solution for water rescue and invaluable in situations where the casualty is conscious and able to assist.

The system can be deployed in numerous ways during a rescue operation, depending on the prevailing conditions.

On flowing water, the inflated tube can be positioned at an angle across the flow to provide a buoyant lifeline for waterborne casualties. The angled tube aids water rescue by allowing a safe, controlled route to safety.

The tube can be directed from a safe land position towards a conscious casualty. The tube wraps around the casualty and secures. It can then be pulled back to land with the casualty.

The tube is easy to carry into remote locations i.e. mountain tarns and gorges.



## Features.

- Lightweight
- Stainless steel 316 marine grade D-rings located every 2 metres along the tube
- Packs down into the supplied rucksack
- High visibility and available in any colour you require
- Custom lengths can be arranged (10 metre Inflatable Rescue Tube is photographed)
- Inflates by hand pump or from a compressed air cylinder



INFLATABLE HOSE - 10M





## Inflatable. 5m Walkway

Our Inflatable Walkway is a versatile piece of equipment that can be used as a path, platform, pontoon or raft.

2 sponsons running underneath the Inflatable Walkway give it excellent stability. As well as water and unstable terrain, it can also be used on ice.

Other sizes are available on request. This item can also be made to custom measurements.

### Features.

- Length: 500 cm
- Width: 120 cm
- No. of chambers: 1+2
- Thickness: 15+15 cm
- Weight: 50 kg
- Material: 15cm drop-stitch and PVC
- 4 lifting handles
- D-ring attachment points in each corner
- 8 D-ring attachment points on each side
- Anti-slip surface

WALKWAY-5M

CAN BE MADE IN ANY  
LENGTH OR STYLE YOU REQUIRE



River Douglas, Wigan



## 10 Person Inflatable. Life Raft

**Shape:** Regular octagon

**Dimensions:** 273 x 273 x 140cm

**Upper air chamber diameter:** 255 mm

**Lower air chamber diameter:** 295 mm

**FRP container length:** 1150 mm

**FRP container diameter:** 685 mm

**Weight:** < 101 kg

CO2/N2 cylinder – automatic inflation

Protective canopy

Boarding ramp and ladder

Inside and outside lifelines

Water stabilising pockets

Righting strap

Air pressure relief valve with plug (for hot conditions)

### Equipment pack

Includes first aid kit; waterproof torch; food and water rations; drinking cup; knife; radar reflector; rocket parachute and smoke signals; signalling mirror; sponge; bailer; sea-anchor; thermal protective aids; anti-seasickness bag and medicine; fishing tackle; bow rope; brush; whistle; mending cloth, glue and emery paper; emergency plugs; emergency repair clamp; dry cells.

A Solas approved 10 person throw-over type life raft, suitable for use on ships and can also be dropped from a helicopter.

Other capacity life rafts are available.





## Size Charts.

### Drysuits, Undersuits & Footwear

For quick sizing, ring with your height, weight, shoe size and chest over undersuit or clothing.  
+44 (0) 1257 25 69 34

#### Gents Drysuits & Undersuits

MENS	XS	S	M	MFL	ML	MLR	MET	L	LR	XL	XLH	XLT	XXL	XXLR	XXXL	XXXLR
HEIGHT	5'4 162 cm	5'6 168 cm	5'8 173 cm	5'9 173 cm	5'10 178 cm	5'10 178 cm	5'11 183 cm	5'11 183 cm	5'11 183 cm	5'12 188 cm	5'12 188 cm	5'12 188 cm	5'12 188 cm	5'12 188 cm	5'12 188 cm	5'12 188 cm
WEIGHT	9 st 57 kg	10 st 63 kg	11 st 70 kg	12 st 77 kg	13 st 83 kg	14 st 90 kg	15 st 97 kg	16 st 103 kg	17 st 110 kg	18 st 117 kg	19 st 124 kg	20 st 131 kg	21 st 138 kg	22 st 145 kg	23 st 152 kg	24 st 159 kg
CHEST	36" 91 cm	38" 96 cm	40" 102 cm	42" 106 cm	44" 112 cm	46" 117 cm	48" 122 cm	50" 127 cm	52" 132 cm	54" 137 cm	56" 142 cm	58" 147 cm	60" 152 cm	62" 157 cm	64" 163 cm	66" 168 cm
C - FLOOR	30" 76 cm	31" 79 cm	32" 81 cm	33" 84 cm	34" 86 cm	35" 89 cm	36" 91 cm	37" 94 cm	38" 97 cm	39" 100 cm	40" 102 cm	41" 105 cm	42" 107 cm	43" 110 cm	44" 113 cm	45" 115 cm

#### Ladies Drysuits & Undersuits

LADIES	S	M	MFL	ML	MLR	L	LR	XL	XLH
HEIGHT	5'3 160 cm	5'5 165 cm	5'6 168 cm	5'6 168 cm	5'6 168 cm	5'7 170 cm	5'7 170 cm	5'8 173 cm	5'8 173 cm
WEIGHT	9 st 57 kg	10 st 63 kg	11 st 70 kg	12 st 77 kg	13 st 83 kg	14 st 90 kg	15 st 97 kg	16 st 103 kg	17 st 110 kg
CHEST	36" 91 cm	38" 96 cm	40" 102 cm	42" 106 cm	44" 112 cm	46" 117 cm	48" 122 cm	50" 127 cm	52" 132 cm
HIPS	36" 91 cm	38" 96 cm	40" 102 cm	42" 106 cm	44" 112 cm	46" 117 cm	48" 122 cm	50" 127 cm	52" 132 cm
C - FLOOR	30" 76 cm	31" 79 cm	32" 81 cm	33" 84 cm	34" 86 cm	35" 89 cm	36" 91 cm	37" 94 cm	38" 97 cm

#### Footwear

UK	6	7	8	9	10	11	12	13	14	15	16	17	18	19	20	21
US	6.5	7.5	8.5	9.5	10.5	11.5	12.5	13.5	14.5	15.5	16.5	17.5	18.5	19.5	20.5	21.5
EU	38	39	40	41	42	43	44	45	46	47	48	49	50	51	52	53



## Need Help?

Our experienced staff members are familiar with the measuring process and can assist you with this task, should you need it.

You can also download the Northern Diver measuring guide from [www.ndiver-rescue.com](http://www.ndiver-rescue.com).

## Rescue Suits.

### Made To Measure

We were the first manufacturer in the industry to introduce a made-to-measure service and computerised cutting systems.

We offer our made-to-measure service on rescue suits, should you need it. This will come at no additional cost.

For further details, please contact us. You can get drysuit sizing assistance from our unique online **Diver Sizer** - available at [www.ndiver-rescue.com](http://www.ndiver-rescue.com).



ND HQ.

## About Us



Northern Diver's headquarters are located in Appley Bridge, Lancashire, UK. Our team of 40 staff are spread across various departments in our specially designed building, which includes a showroom, offices, bonded warehouse and repairs, alterations, engineering and testing divisions.

Our main far east production facility is located in China, just over the border from Hong Kong. It employs 200 people, is ISO 9001 approved and has a laboratory for materials and product testing. Our Hong Kong-based quality engineer visits the facility on a regular basis, as do our staff.

We hold £3.9 million worth of stock in our bonded warehouse, with a 6 month rolling turn over - ensuring that we can offer instant delivery to the majority of our customers.

The blue areas of the map below show countries supplied by Northern Diver.







## Working Together.

### We Are Here For You

We like to ensure our customers get exactly what they need, when they need it.

If you'd like a visit from us with some sample products, or if you'd like to visit us at our headquarters, just get in touch. Maintenance and repairs training is also available. Need suits for an emergency or flood? We have a fast-response system in place to make sure everything you need is dealt with as quickly as possible.

To arrange a visit contact us:

Tel: +44 (0) 1257 25 69 34

Mob: +44 (0) 7854 25 20 13

Email: [craig@ndiver.com](mailto:craig@ndiver.com)  
[jackie@ndiver.com](mailto:jackie@ndiver.com)

**All members of our Specialist Rescue Equipment team undergo water rescue training with Outreach Rescue and are qualified Swift Water Rescue Technicians.**



Tanybwllch Farm,  
Bangor LL57 3HY  
+44 (0) 1248 60 15 46

## Always Improving.

### Product Development

Northern Diver has staff stationed in the UK, Hong Kong, China and parts of Europe.

Staff meet regularly - either at our headquarters or factories, or via the internet.

New designs, products and improvements are always on the agenda, as is sourcing the best quality materials or developing our own.

Drysuits, for example, are continually scrutinised to ensure aspects such as seam placement and cutting patterns are of the highest quality.

All products are tested to CE until the team is happy with the standard, in a bid to ensure that whatever you purchase from Northern Diver is a worthy investment.





ND.

## Find Us Online



There's a wealth of information available on our main website.

As well as product information, here you'll find brochures, manuals, help videos and other customer support information.

Our rescue website can be accessed from our main website, as well as our commercial and military websites. If you have time, take a look at these too.

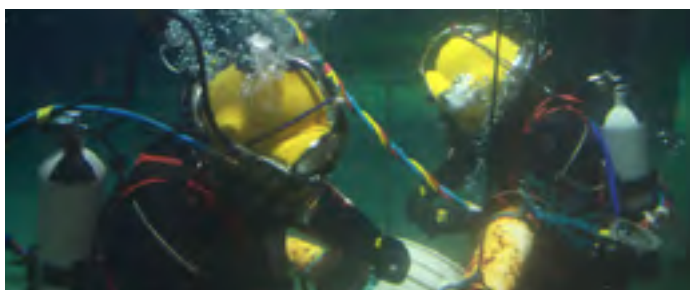
Rescue organisations can apply for an online account with us to view all the products on our rescue website with prices.

[www.ndiver-rescue.com](http://www.ndiver-rescue.com)



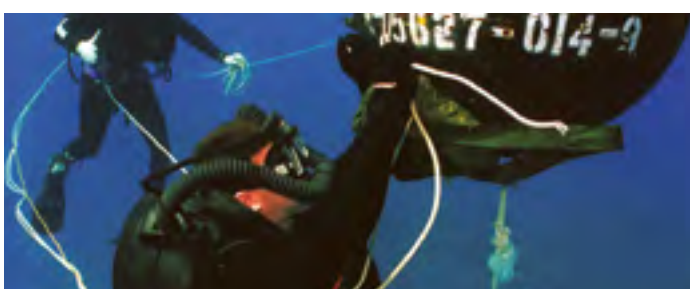
## Retail

Our equipment is trusted by the best. Cross-sector technical expertise means we consistently launch innovative products for sport divers. [www.ndiver.com](http://www.ndiver.com)



## Commercial

Our commercial range has been designed and developed in close consultation with our clients - experienced commercial divers and commercial diving organisations around the world. [www.ndiver-commercial.com](http://www.ndiver-commercial.com)



## Military

We are the prime contractor to the UK Ministry of Defence for drysuits and diving equipment. Our military diving hardware is also used by numerous friendly nations. [www.ndiver-military.com](http://www.ndiver-military.com)



We are located in Appley Bridge, Lancashire, UK  
- only 5 minutes from the M6 (J27) motorway.

Manchester & Liverpool international airports are only 40 minutes away.  
Wigan North Western rail station is 2 hours & 3 minutes from London Euston.  
We are more than happy to collect clients and return them after their visit.

Fire & Water Rescue

01257 25 69 34 | [www.ndiver-rescue.com](http://www.ndiver-rescue.com)

Military Diving & Systems

01257 25 69 36 | [www.ndiver-military.com](http://www.ndiver-military.com)

Commercial Diving Equipment

01257 25 69 49 | [www.ndiver-commercial.com](http://www.ndiver-commercial.com)



### **Specialist Rescue Equipment**

Tel: +44 (0) 1257 25 69 34   Mob: +44 (0) 7854 25 20 13   Email: [craig@ndiver.com](mailto:craig@ndiver.com) or [jackie@ndiver.com](mailto:jackie@ndiver.com)

### **Northern Diver International Ltd,**

East Quarry, Appley Lane North, Appley Bridge, Wigan, Lancashire, UK, WN6 9AE